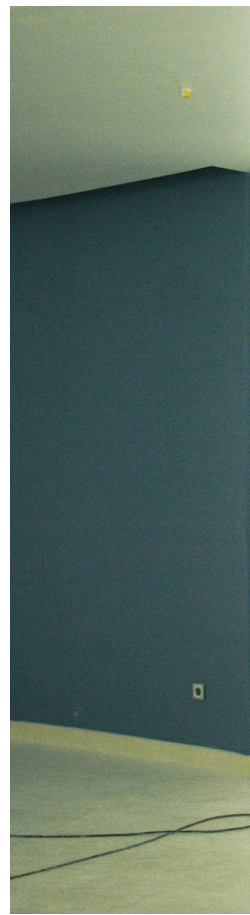




# **FOGOFIL SYSTEM**

**glazed steel**







## MODELS

## FOGOFIL SYSTEM

Accessories and hardware	04
Profile   Details	05
<b>Fogofil System E30  E60</b>	
Single and double leaf door   overpanel   side panel	12
Wall partitions	18
<b>Fogofil System EI30</b>	
Single and double leaf door   overpanel   side panel	20
Wall partitions	26
<b>Fogofil System EI60</b>	
Single and double leaf door   overpanel   side panel	28
Wall partitions	34
<b>Fogofil System EI90</b>	
Single and double leaf door   overpanel   side panel	36
Wall partitions	42

# hardware

## FOGOFIL SYSTEM

### handle / anti-panic bar<sup>(1)</sup>

1	standard	anti-panic lever handle finished in black or stainless steel.	
2	standard	anti-panic bar with box unit, tube, cover caps and arms (black-black/ black-red/black-green/silver-silver/stainless steel-stainless steel).	

<sup>(1)</sup> alternative: the door may be equipped with a pair of lever handles.

### door closer

3	standard	door closer with an link arm (opening angle up to 180°)	2 door closer with an link arm (opening angle up to 180°) + closing sequence selector
	standard	door closer with guide rail (opening angle up to 110°)	2 door closer with guide rail (opening angle up to 110°) + closing sequence selector
	optional	concealed door closer (opening angle up to 110°) (Consult TRIA technical department to evaluate this option)	concealed door closer (opening angle up to 110°) + closing sequence selector (Consult TRIA technical department to evaluate this option)

### lock / counter lock

4	standard	anti-panic lock with 1 point locking	anti-panic lock with 1 point locking + counter lock
	optional	anti-panic lock with 3 points s locking	anti-panic lock with 3 points locking + counter lock

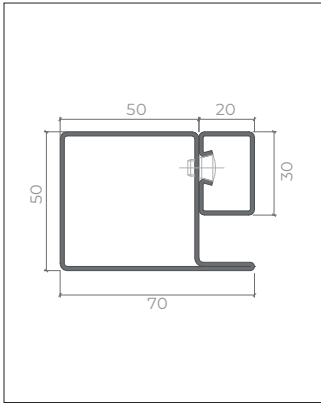
### cylinder

5	standard	cylinder (european profile) 1/2 cylinder (European profile) with anti-panic accessories	cylinder (european profile) 1/2 cylinder (european profile) with anti-panic accessories
---	----------	---	---

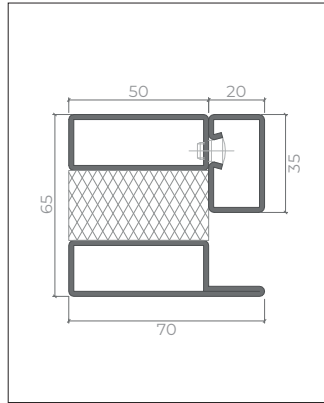
### hinges

6	standard	2 or more exclusive hinges of this series (according the model, weight, dimension and intensity of use)	2 or more exclusive hinges of this series (per leaf (according the model, weight, dimension and intensity of use)
---	----------	--	--

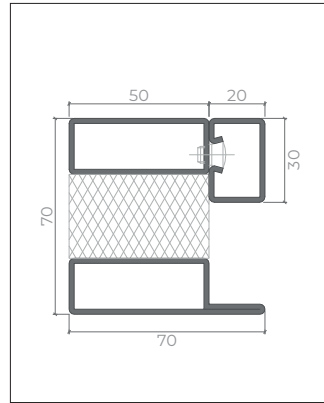
# profile



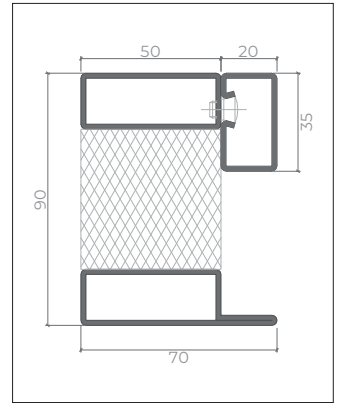
profile - E30 | E60



profile - EI 30

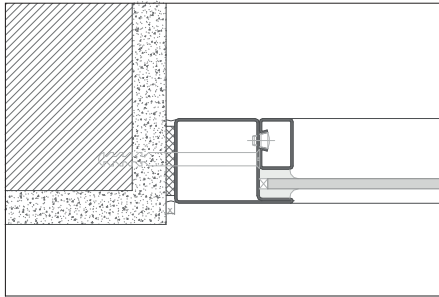


profile - EI 60

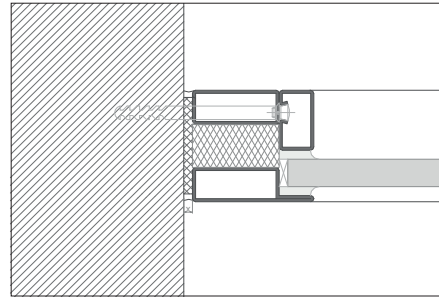


profile - EI 90

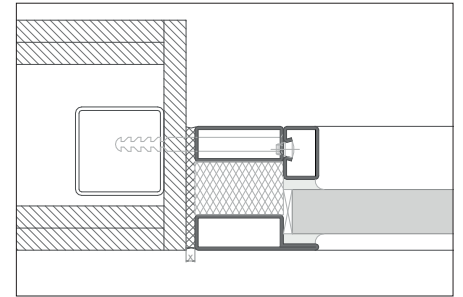
# details



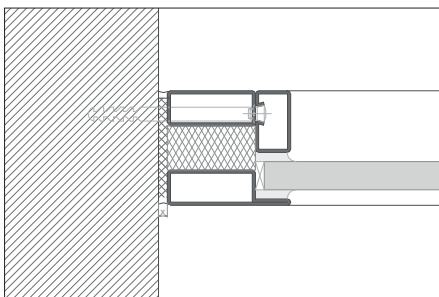
masonry wall fixing - profile E30 | E60



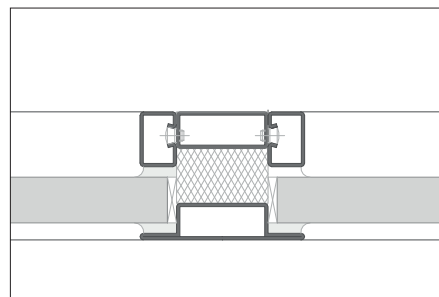
concrete wall fixing - profile EI 30



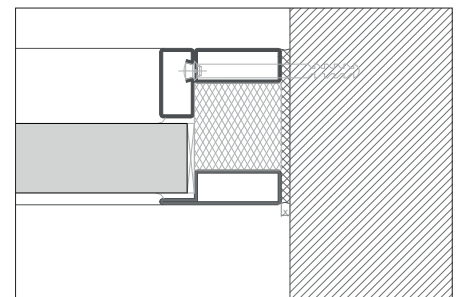
drywall system wall fixing - profile EI 60



wall partitions - profile EI 30

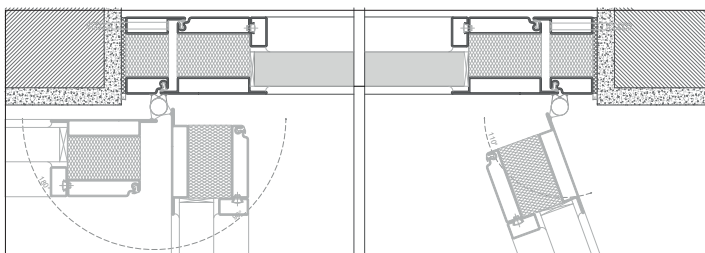


wall partitions - profile EI 60



wall partitions - profile EI 90

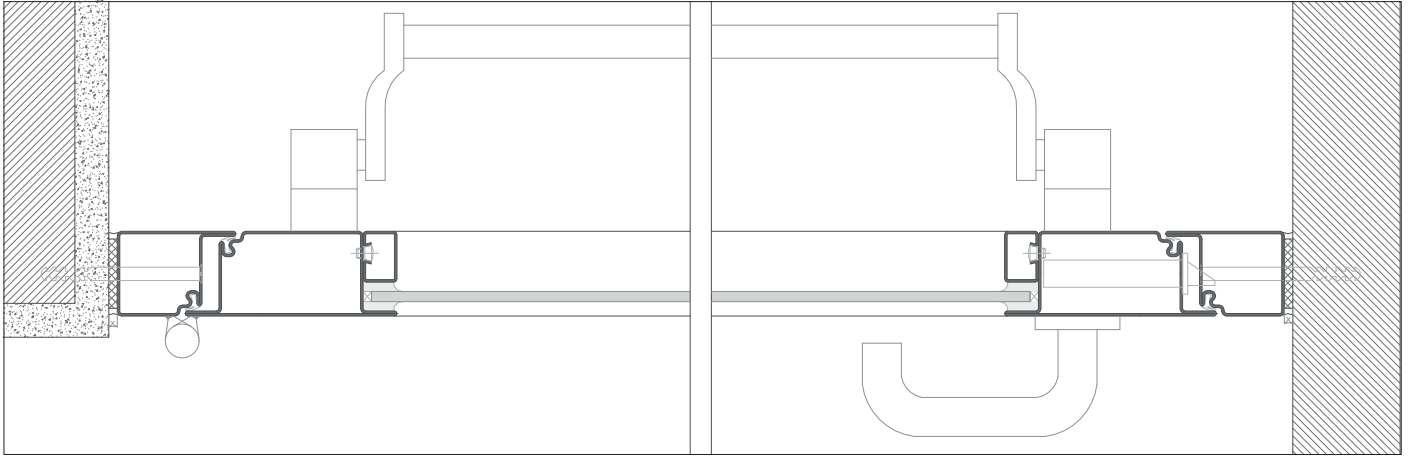
# opening scheme



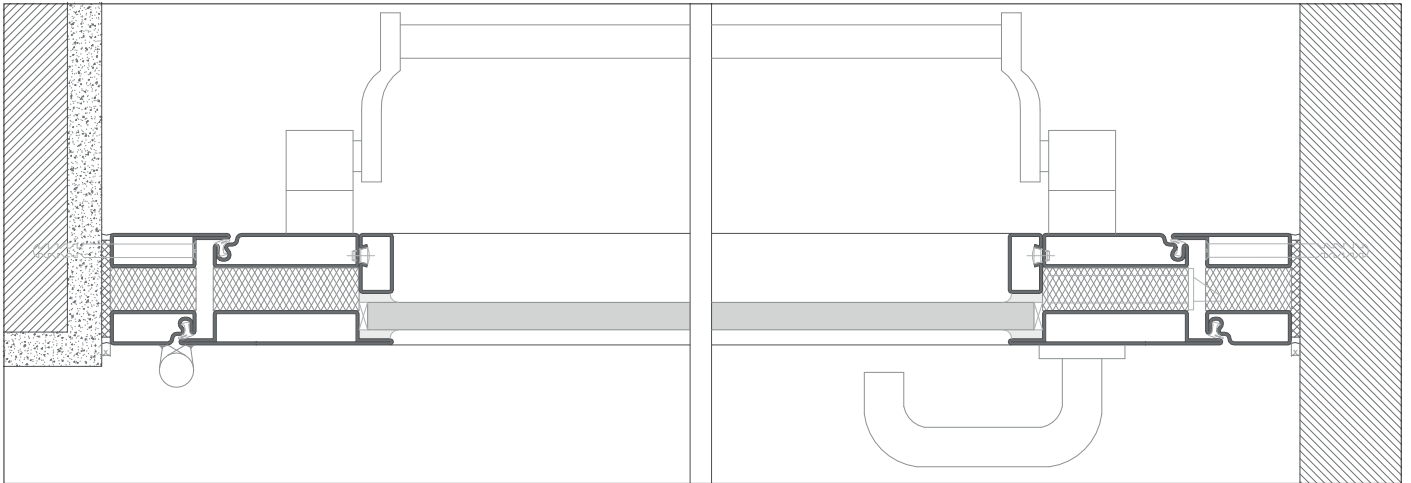
door closer with an link arm  
(opening angle up to 180°)

door closer with guide rail  
(opening angle up to 110°)

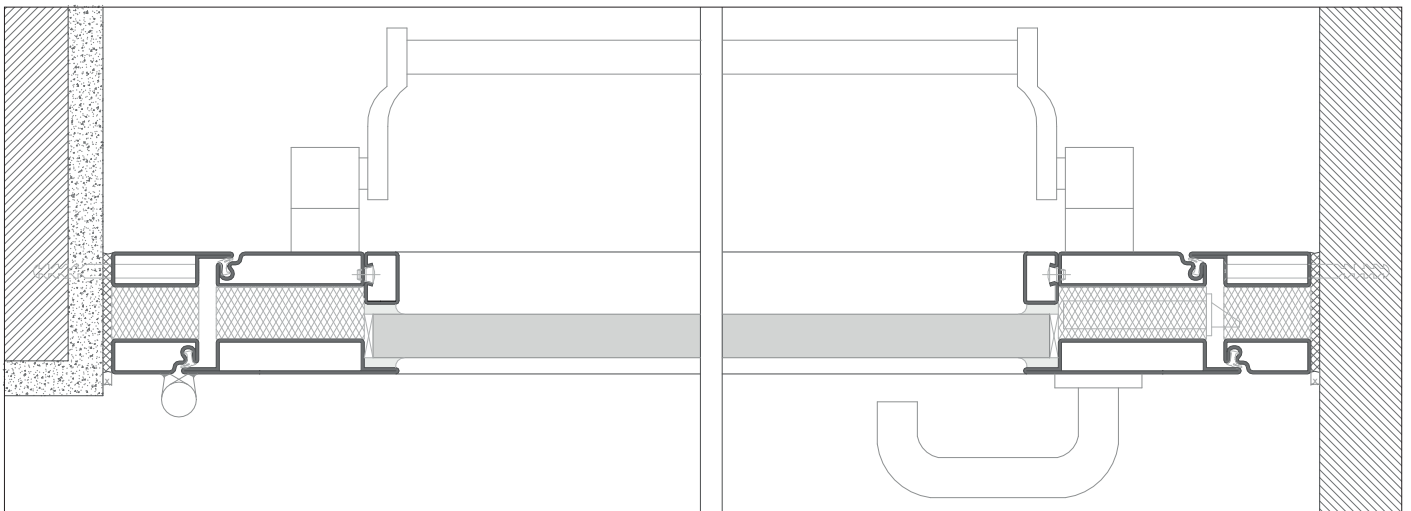
# details



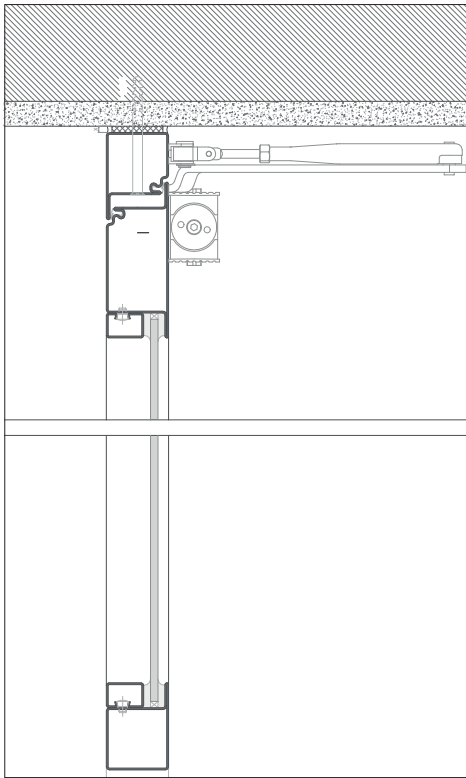
door detail | 1 leaf - E30 | E60



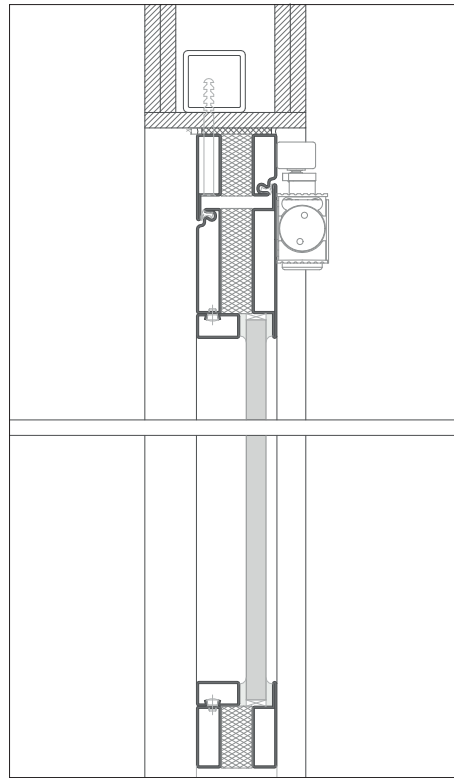
door detail | 1 leaf - EI 30



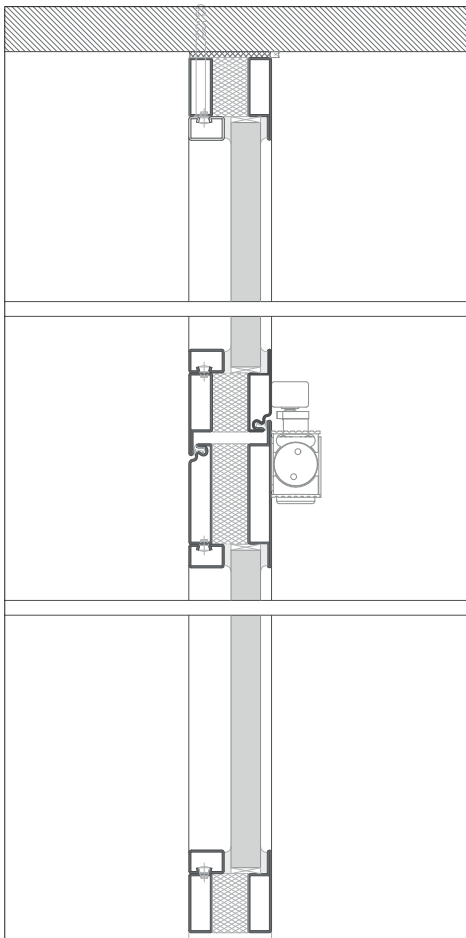
door detail | 1 leaf - EI 60



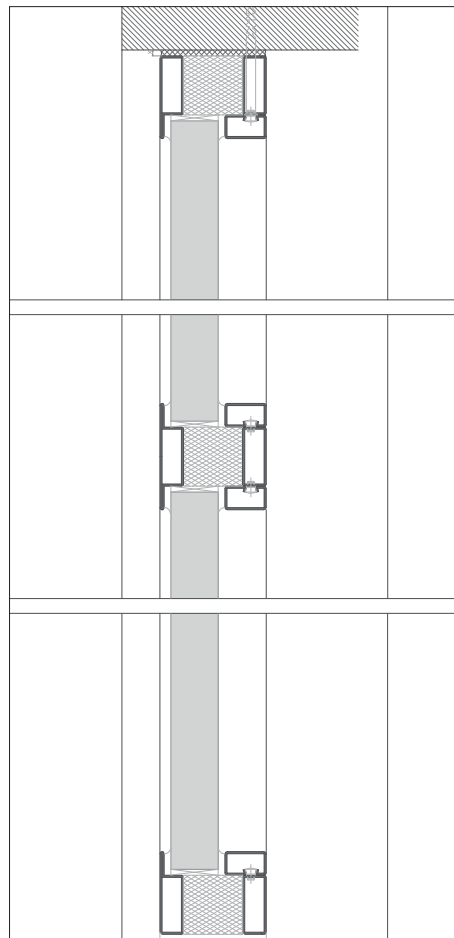
masonry wall door mounting  
- profile E30 | E60



drywall system wall mounting | door  
closer with guide rail - profile EI 30



door and overpanel mounting on a concrete  
wall | door closer with guide rail - profile EI  
60

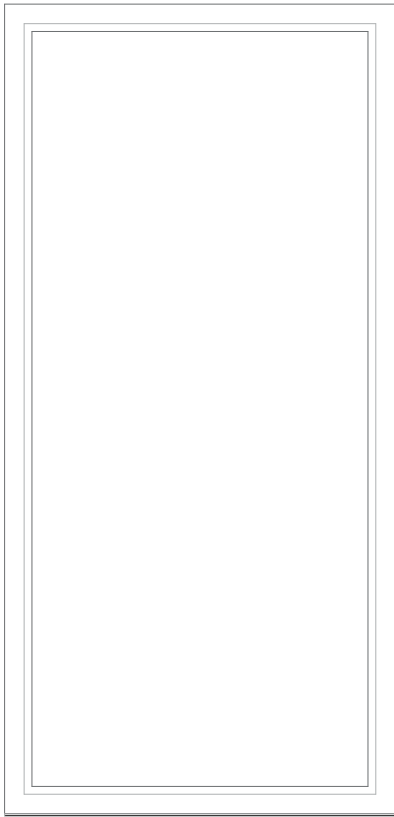


wall partitions fixed to a concrete wall -  
profile EI 30 | EI 60 | EI 90

## wall partitions







height max. 2760 mm



height max. 2760 mm



height max. 3590 mm



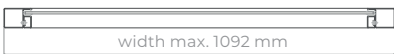
height max. 3433 mm

E30 | E60

EI 30

EI 60

EI 90



width max. 1092 mm

E30 | E60



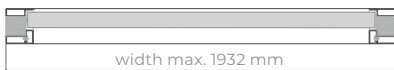
width max. 1092 mm

EI 30



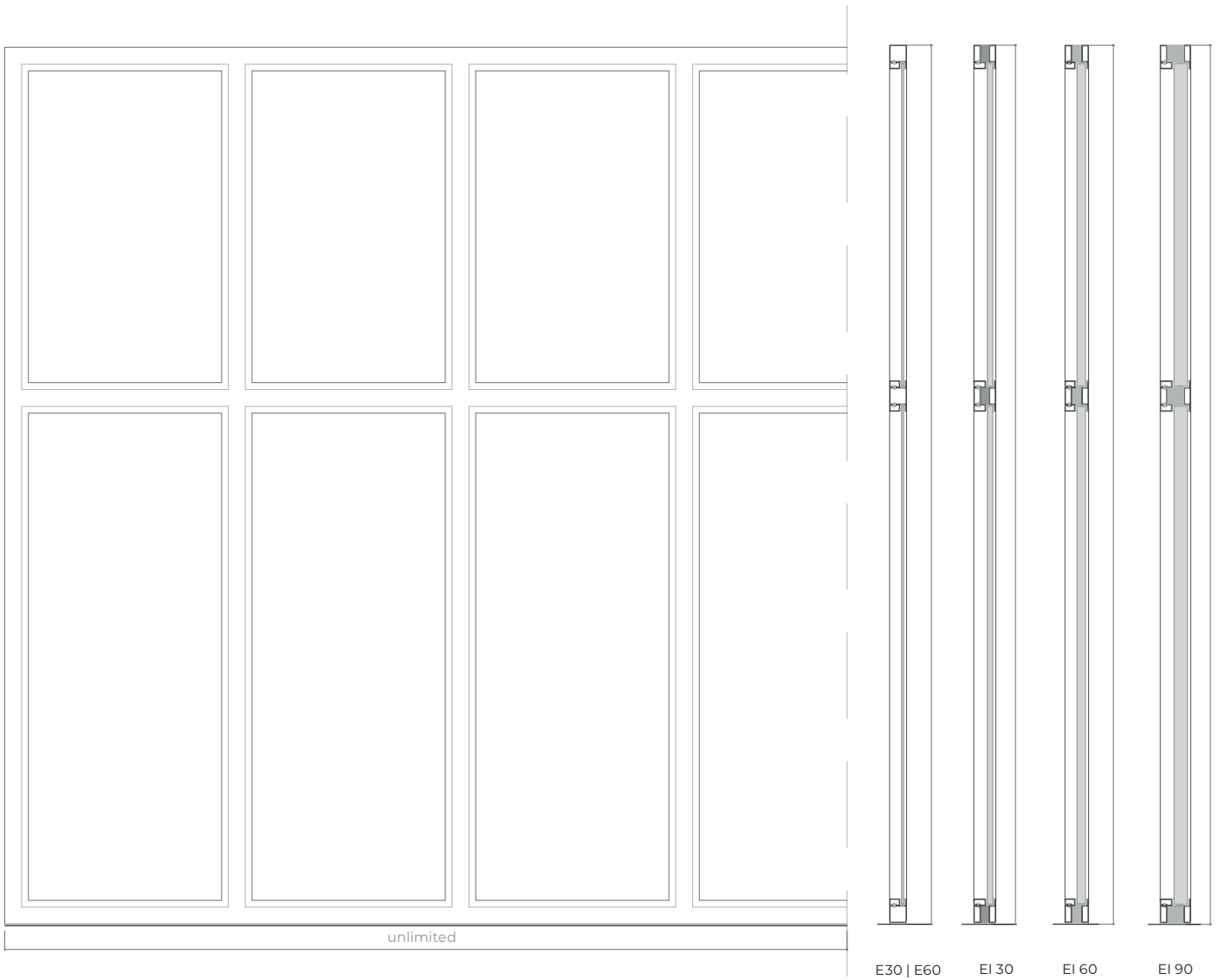
width max. 1932 mm

EI 60



width max. 1932 mm

EI 90





Butt-joint system EI30, EI60 e EI90  
(Consult TRIA technical department to  
evaluate this option)

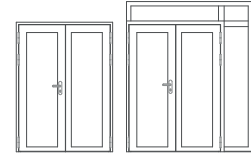
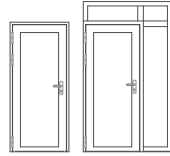


# FOGOFIL SYSTEM E30 | E60

## description

Manufactured in accordance with the TRIA – FOGOFIL construction model, tested in accordance the Standard EN 1634-1. Profile in cold rolled steel, continuously welded, factory treated against corrosion by electrolytic galvanization, fire resistant glass of the system, galvanized glazing beds with concealed fixation and welded or screwed system hinges.

## specification



model | format

glazed single leaf door

glazed double leaf door

glazed single leaf door  
+ overpanel and/or side panel

glazed double leaf door +  
overpanel and/or side panel

## classification

both sides

both sides

classification (EN 1634-1)

E 30 | E 60

E 30 | E 60

*Classification according EN 13501-2*

## leaf dimensions(mm)

W x H (standard)<sup>(1)</sup>

800 / 900 x 2000 / 2100

1400 / 1600 / 1800 x 2000 / 2100

W maximum<sup>(1\*)</sup>

1403

1380

H maximum<sup>(1\*)</sup>

2702

2542

maximum area

3,44 m<sup>2</sup>

3.42m<sup>2</sup>

external frame (standard)

L + 140 x H + 70

L + 140 x H + 70

<sup>(1)</sup> W x H = width X height = free passage

<sup>(1\*)</sup> W and H should be considered in conjunction with the maximum area

## side panels (mm)

W maximum<sup>(1\*)</sup>

1092

1092

H maximum<sup>(1\*)</sup>

2760

2760

maximum area

2.74 m<sup>2</sup>

2.74 m<sup>2</sup>

<sup>(1\*)</sup> W and H should be considered in conjunction with the maximum area

## overpanel dimensions (mm)

L maximum<sup>(1)</sup>

H maximum<sup>(1)</sup>

maximum area

other dimensions

<sup>(1)</sup>W and H should be considered in conjunction with the maximum area

## type 1

without vertical profile on center

2990

506

1,37 m<sup>2</sup>

on request

## type 2

with vertical profile on center

1483

807

1.2m<sup>2</sup>

on request

## construction

profile thickness (mm)

50

50

leaf weight (kg/ml)<sup>(2)</sup>

3

3

hinges (per leaf)<sup>(3)</sup>

2

2

glass thickness (standard)

the thickness can vary from 6 to 12mm, according to type of glass E30 | E60

the thickness can vary from 2 to 12mm, according to type of glass E30 | E60

finishing (standard)

galvanized steel for painting / standard RAL color<sup>(4)</sup>

galvanized steel for painting / standard RAL color<sup>(4)</sup>

finishing (optional)

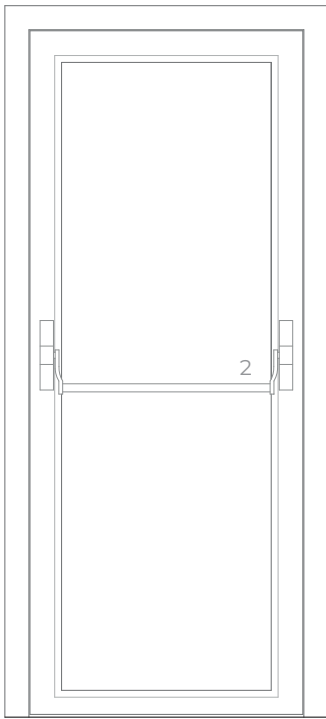
stainless steel

stainless steel

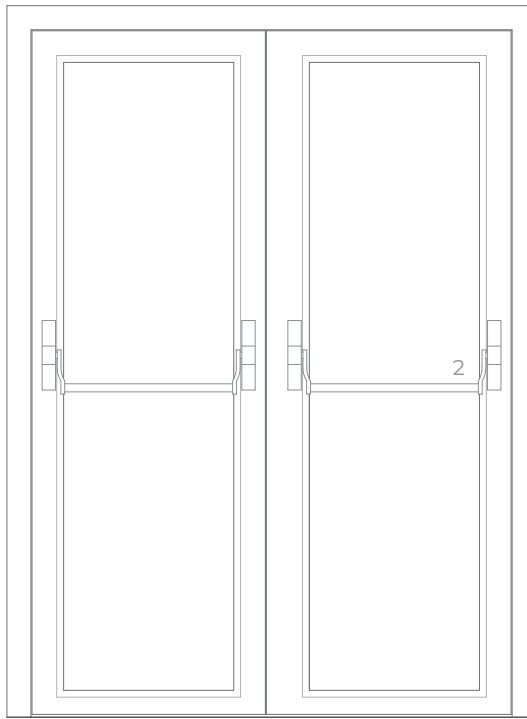
<sup>(2)</sup>leaf weight is conditioned by the type of glass

<sup>(3)</sup> 2 ou 3 - the number of hinges, per leaf, must be according to the weight, size and intensity of use

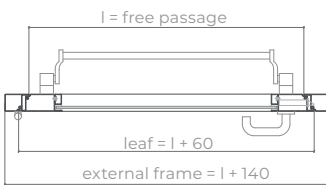
<sup>(4)</sup>RAL colors standard= 7035, 7038, 9005 e 9010



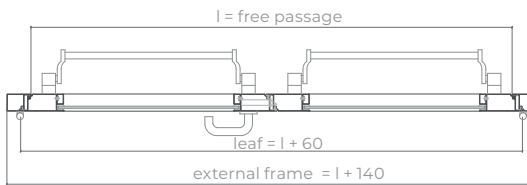
exterior view



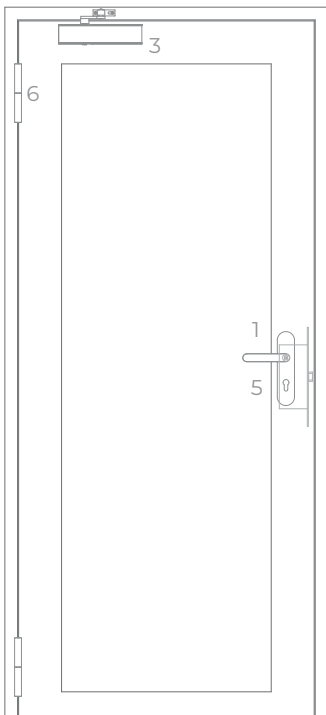
exterior view



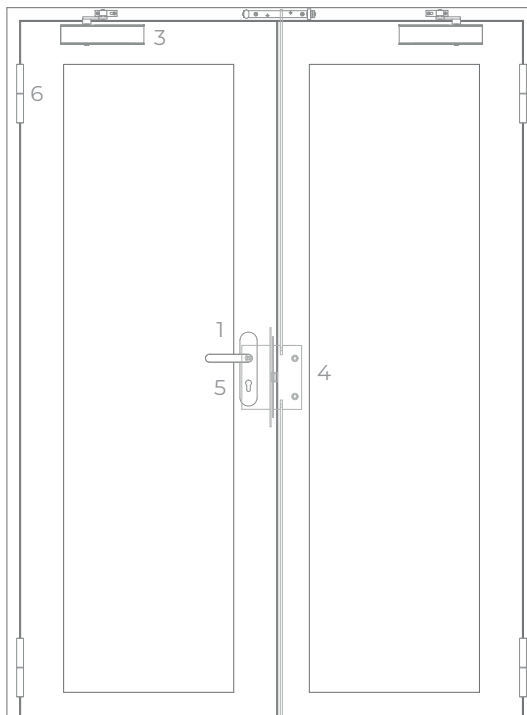
horizontal section



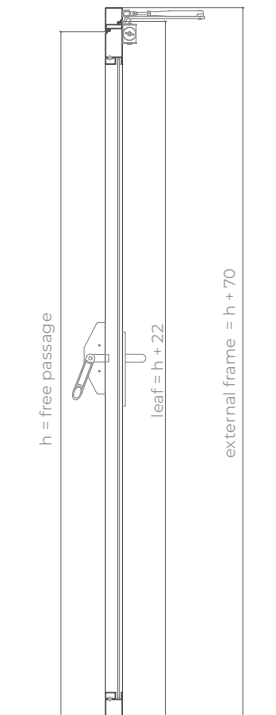
horizontal section



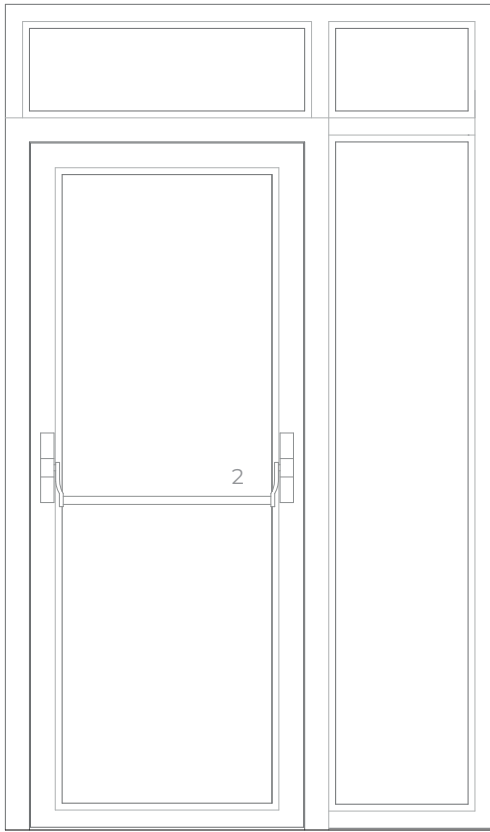
interior view



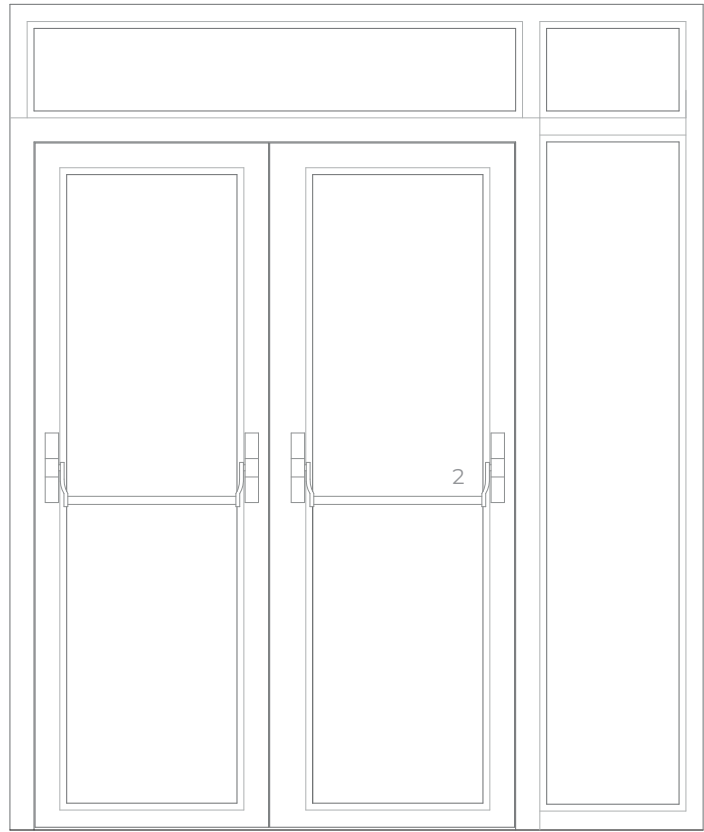
interior view



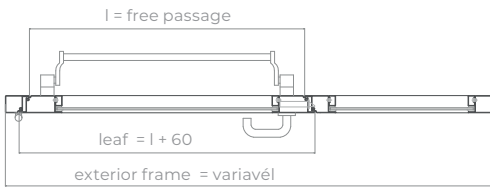
vertical section



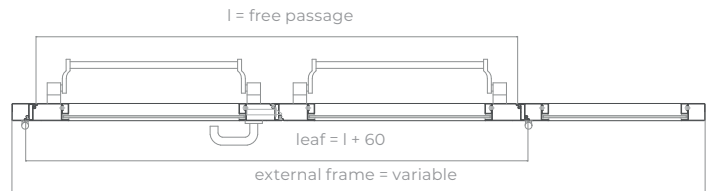
interior view



interior view

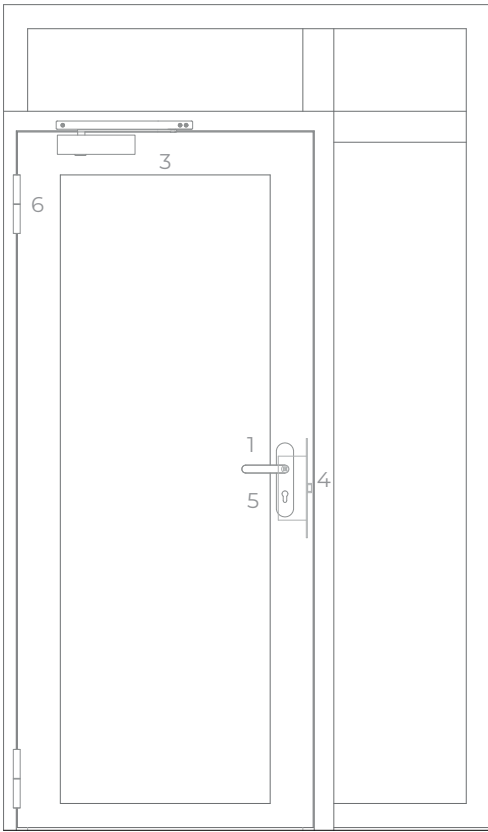


horizontal section

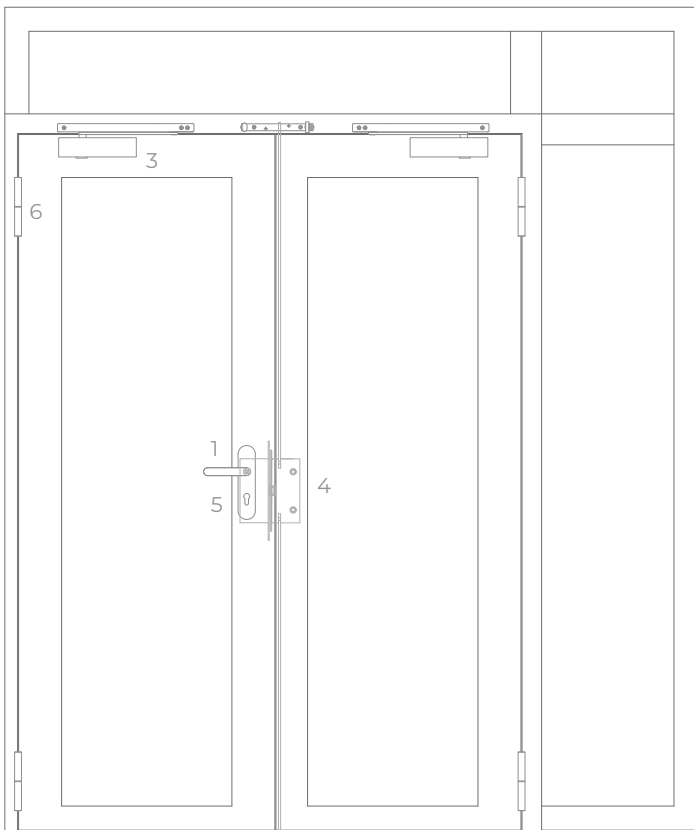


horizontal section

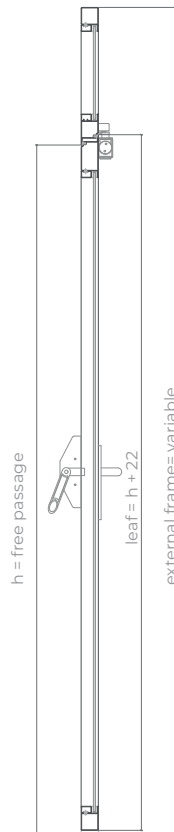




exterior view



exterior view



vertical section  
door and overpanel



vertical section  
wall partition



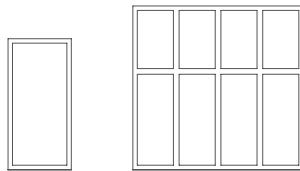
# FOGOFIL SYSTEM

WALL PARTITIONS E30 | E60

## description

Manufactured in accordance with the TRIA – FOGOFIL construction model, tested in accordance the Standard EN 1634-1. Profile in cold rolled steel, continuously welded, factory treated against corrosion by electrolytic galvanization, fire resistant glass of the system, galvanized glazing beds with concealed fixation.

## specification



model | format

wall partitions

## classification

classification (EN 1634-1)

*Classification according EN 13501-2*

both sides

E30 | E60

## glazed panel dimensions E30 | E60

*(Unlimited width, by using intermediate vertical profiles)*

W maximum<sup>(1)</sup>

1092

H maximum<sup>(1)</sup>

2760

maximum area

2.74 m<sup>2</sup>

*<sup>(1)</sup> W and H should be considered in conjunction with the maximum area*

## overpanel dimensions (mm)

W maximum

2990

H maximum

506

maximum area

1,37 m<sup>2</sup>

other dimensions

on request

## type 2

with vertical profile on center

1483

807

1.2 m<sup>2</sup>

on request

## type 1

without vertical profile on center

## construction

profile thickness (mm)

50

profile weight (Kg/m)<sup>(2)</sup>

2

glass thickness (mm)

6 to 14 mm

finishing (standard)

galvanized steel for painting / standard RAL color<sup>(3)</sup>

finishing (optional)

stainless steel

*<sup>(2)</sup> panel weight is conditioned by the type of glass*

*<sup>(3)</sup> RAL colors standard= 7035, 7038, 9005 e 9010*



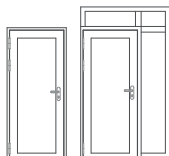
# FOGOFIL SYSTEM EI30

## description

Manufactured according to the TRIA - FOGOFIL construction model, certified in accordance with Standard EN 1634-1. Profile in cold rolled steel, continuously welded, factory treated against corrosion by electrolytic galvanization, including integrated thermal break system, fire resistant glass of the system, galvanized glazing beds with concealed fixation and welded or screwed system hinges.

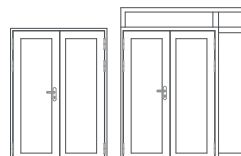
## specification

model | format



glazed single leaf door

glazed single leaf door +  
overpanel and/or side panel



glazed double leaf door

glazed double leaf door  
+ overpanel and/or side panel

## classification

classification(EN 1634-1)

*Classification according EN 13501-2*

both sides

EI 30

both sides

EI 30

## leaf dimensions(mm)

W x H (standard)<sup>(1)</sup>

800 / 900 x 2000 / 2100

1400 / 1600 / 1800 x 2000 / 2100

W maximum<sup>(1)</sup>

1296

1225

H maximum<sup>(1)</sup>

2566

2605

maximum area

2,79 m<sup>2</sup>

2.89m<sup>2</sup>

external frame (standard)

L + 140 x H + 70

L + 140 x H + 70

<sup>(1)</sup> W x H = width X height = free passage

<sup>(1)</sup> W and H should be considered in conjunction with the maximum area

## side panel dimensions (mm)

W maximum<sup>(1)</sup>

1092

1092

H maximum<sup>(1)</sup>

2760

2760

maximum area

2.74 m<sup>2</sup>

2.74 m<sup>2</sup>

<sup>(1)</sup> W and H should be considered in conjunction with the maximum area

## overpanel dimensions (mm)

W maximum<sup>(1)</sup>

H maximum<sup>(1)</sup>

maximum area

other dimensions

<sup>(1)</sup>W and H should be considered in conjunction with the maximum area

## construction

profile thickness (mm)

leaf weight (kg/m)<sup>(2)</sup>

hinges (per leaf)<sup>(3)</sup>

glass thickness (standard)

finishing (standard)

finishing (optional)

<sup>(2)</sup>leaf weight is conditioned by the type of glass

<sup>(3)</sup>the number of hinges, per leaf, may increase depending on the weight, size and intensity of use

<sup>(4)</sup>RAL colors standard= 7035, 7038, 9005 e 9010

## type 1

without vertical profile on center

2950

449

1.2 m<sup>2</sup>

on request

65

6

2

the thickness can vary from 16 to 25 mm, according to type of glass EI 30

galvanized steel for painting / standard RAL color<sup>(4)</sup>

stainless steel

## type 2

with vertical profile on center

2530

828

1.9m<sup>2</sup>

on request

65

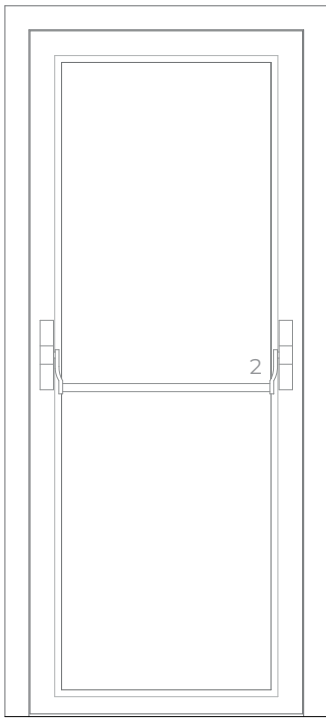
6

2

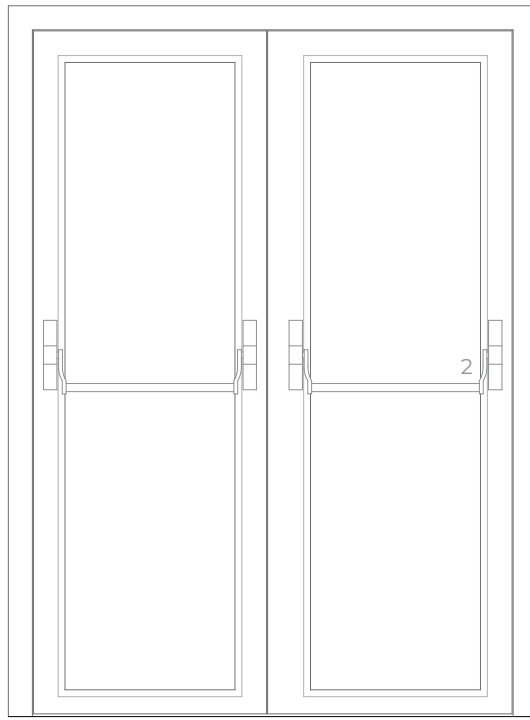
the thickness can vary from 16 to 25 mm, according to type of glass EI 30

galvanized steel for painting / standard RAL color<sup>(4)</sup>

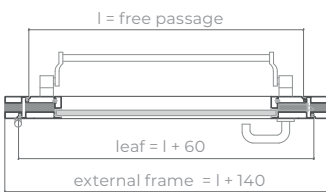
stainless steel



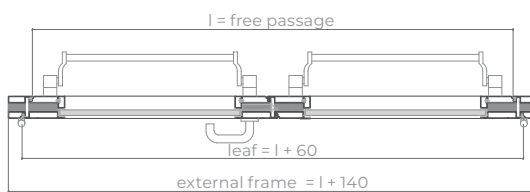
interior view



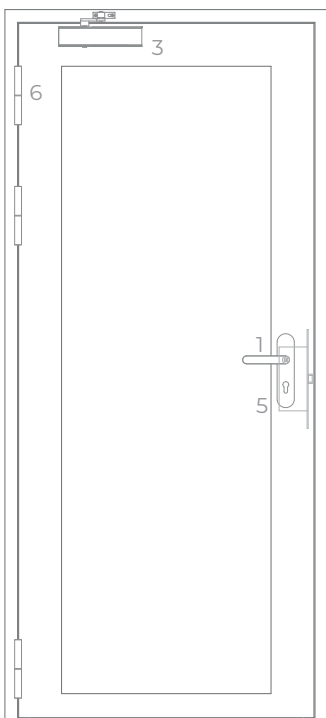
interior view



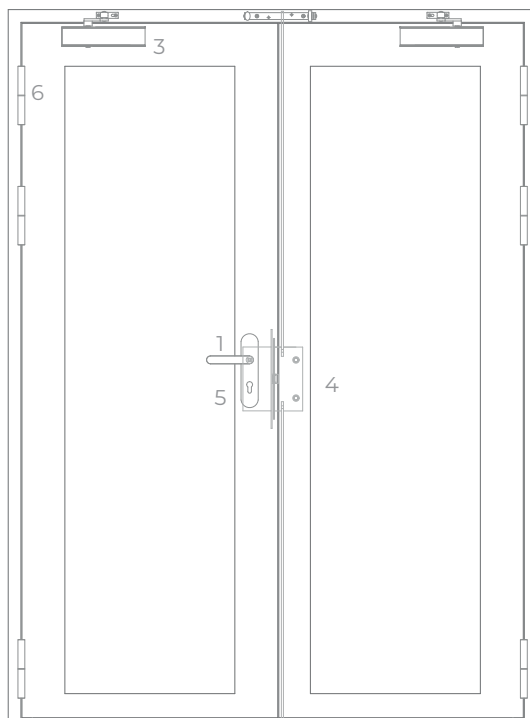
horizontal section



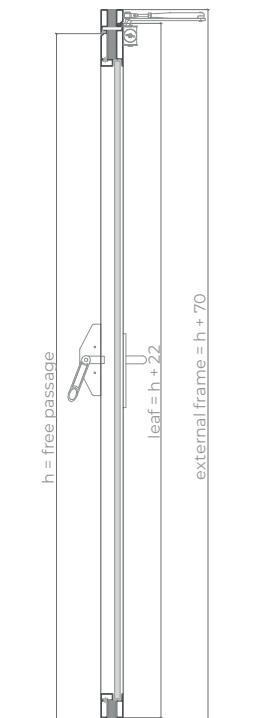
horizontal section



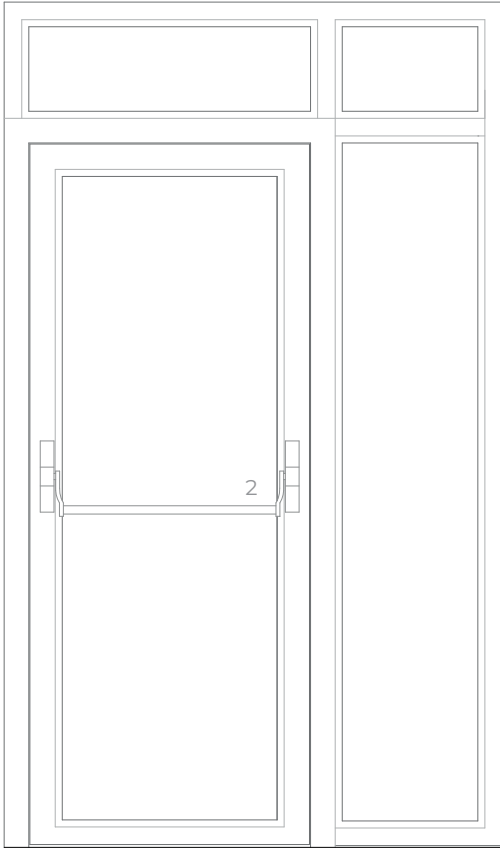
exterior view



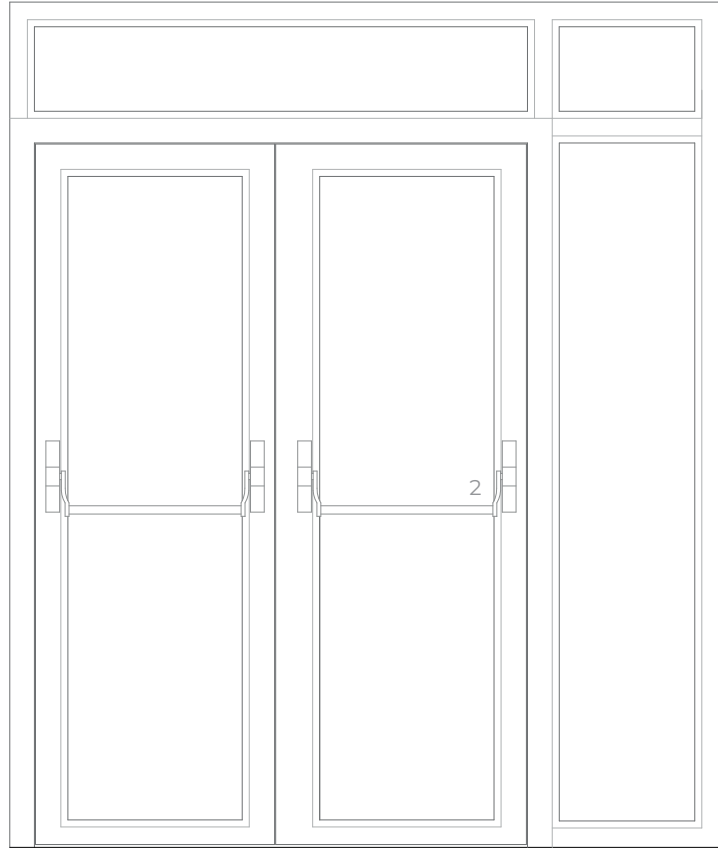
exterior view



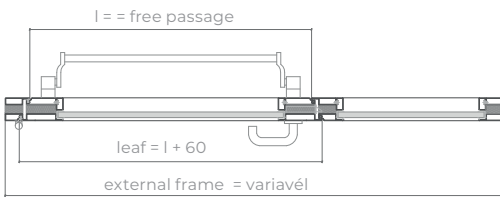
vertical section



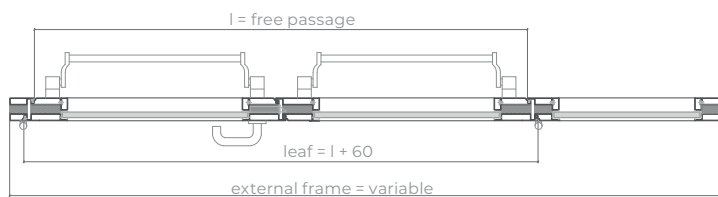
interior view



interior view

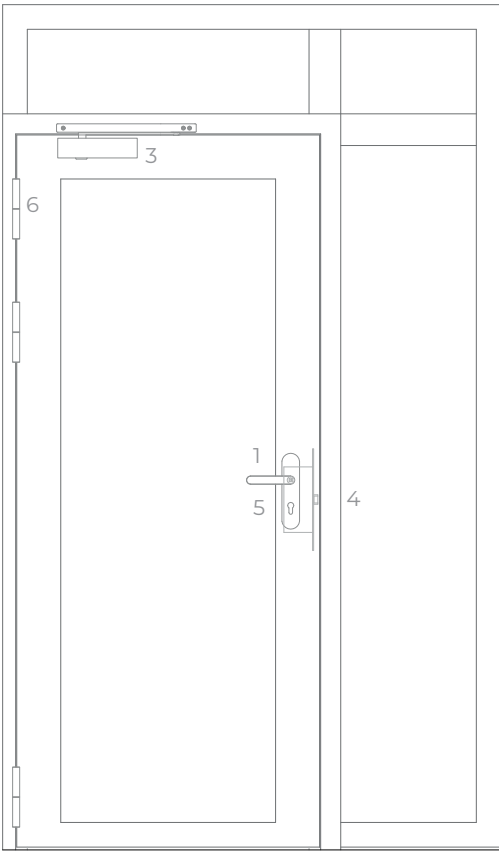


horizontal section

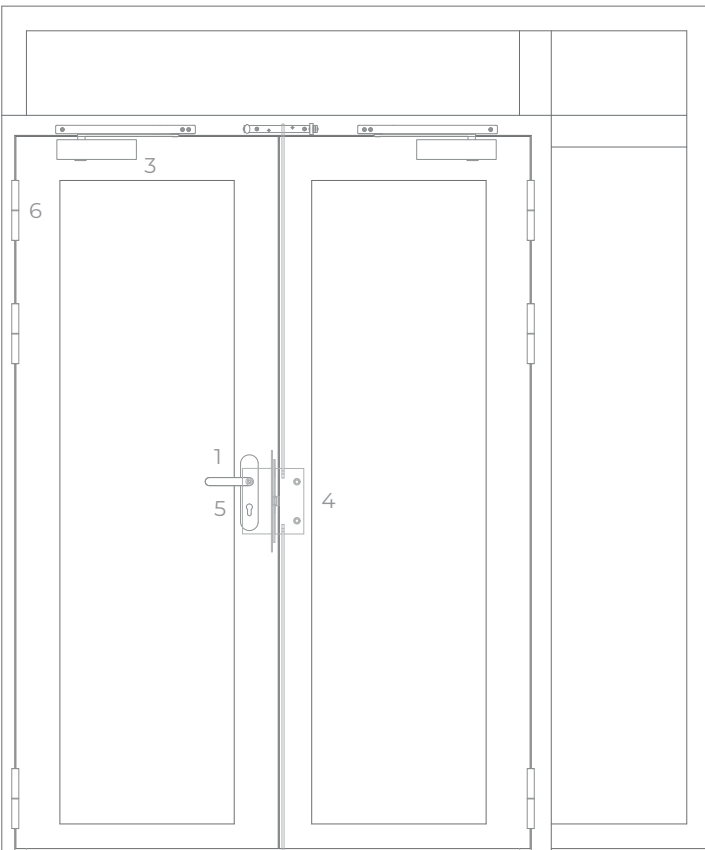


horizontal section

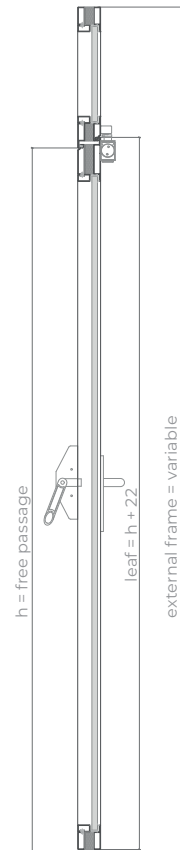




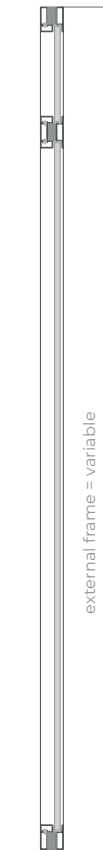
exterior view



exterior view



vertical section door



vertical section partitions



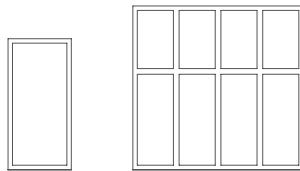
# FOGOFIL SYSTEM

WALL PARTITIONS EI30

## description

Manufactured according to the TRIA - FOGOFIL construction model, certified in accordance with Standard EN 1634-1. Profile in cold rolled steel, continuously welded, factory treated against corrosion by electrolytic galvanization, including integrated thermal break system, fire resistant glass of the system and galvanized glazing beds with concealed fixation.

## specification



model | format

wall partitions

## classification

classification (EN 1634-1)

*classification according EN 13501-2*

both sides

EI 30

## glazed panels dimensions EI 30

*(Unlimited width, by using intermediate vertical profiles)*

W maximum <sup>(1)</sup>	1092
H maximum <sup>(1)</sup>	2760
maximum area	2.74 m <sup>2</sup>

<sup>(1)</sup> W and H should be considered in conjunction with the maximum area

## overpanel dimensions (mm)

	<b>type 1</b> without vertical profile on center	<b>type 2</b> with vertical Profile on center
W maximum	2950	2530
H maximum	449	828
maximum area	1.2 m <sup>2</sup>	1.9 m <sup>2</sup>
other dimensions	on request	on request

## construction

profile thickness (mm)	65
profile weight (Kg/ m) <sup>(2)</sup>	6
glass thickness (mm)	16 to 25 mm
finishing (standard)	galvanized steel for painting / standard RAL color <sup>(3)</sup>
finishing (optional)	stainless steel

<sup>(2)</sup> panel weight is conditioned by the type of glass

<sup>(3)</sup> RAL colors standard= 7035, 7038, 9005 e 9010



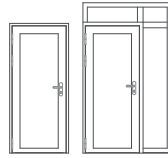
# FOGOFIL SYSTEM E160

## description

Manufactured according to the TRIA - FOGOFIL construction model, certified in accordance with Standard EN 1634-1. Profile in cold rolled steel, continuously welded, factory treated against corrosion by electrolytic galvanization, including integrated thermal break system, fire resistant glass of the system and galvanized glazing beds with concealed fixation and welded or screwed system hinges.

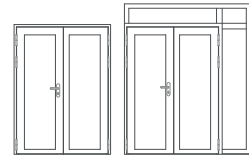
## specification

model | format



glazed single leaf door

glazed single leaf door  
+ overpanel and/or side panel



glazed double leaf door

glazed double leaf door  
+ overpanel and/or side panel

## classification

classification (EN 1634-1)

*classification according EN 13501-2*

both sides

EI 60

both sides

EI 60

## leaf dimensions (mm)

W x H (standard)<sup>(1)</sup>

800 / 900 x 2000 / 2100

1400 / 1600 / 1800 x 2000 / 2100

W maximum<sup>(1)</sup>

1380

1380

H maximum<sup>(1)</sup>

2676

2676

maximum area

3.10 m<sup>2</sup>

3.10m<sup>2</sup>

exterior frame (standard)

L + 140 x H + 70

L + 140 x H + 70

<sup>(1)</sup> W x H = width X height = free passage

<sup>(1)</sup> W and H should be considered in conjunction with the maximum area

## side panels (mm)

W maximum<sup>(1)</sup>

1932

1932

L maximum<sup>(1)</sup>

3590

3590

maximum area

6.01 m<sup>2</sup>

6.01 m<sup>2</sup>

<sup>(1)</sup> W and H should be considered in conjunction with the maximum area

## overpanel dimensions (mm)

W maximum <sup>(1)</sup>	3144	3144
H maximum <sup>(1)</sup>	894	894
maximum area	2.34 m <sup>2</sup>	2.34 m <sup>2</sup>
other dimensions	on request	on request

<sup>(1)</sup> W and H should be considered in conjunction with the maximum area

## construction

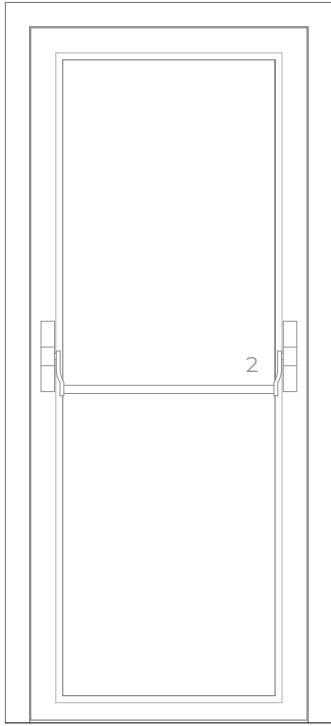
profile thickness(mm)	70	70
leaf weight (kg/ml) <sup>(2)</sup>	7	7
hinges (per leaf) <sup>(3)</sup>	2	2
glass thickness (standard)	the thickness can vary from 25 to 31 mm, according to type of glass EI 60	the thickness can vary from 25 to 31 mm, according to type of glass EI 60
finishing (standard)	galvanized steel for painting / standard RAL color <sup>(4)</sup>	galvanized steel for painting / standard RAL color <sup>(4)</sup>
finishing (optional)	stainless steel	stainless steel

<sup>(2)</sup> leaf weight is conditioned by the type of glass

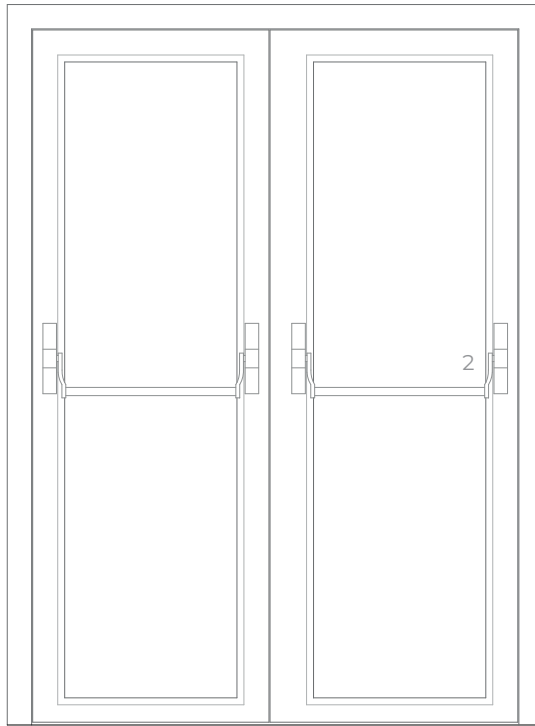
<sup>(3)</sup> the number of hinges, per leaf, may increase depending on the weight, size and intensity of use

<sup>(4)</sup> RAL colors standard= 7035, 7038, 9005 e 9010

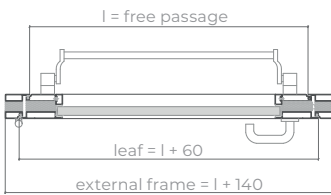




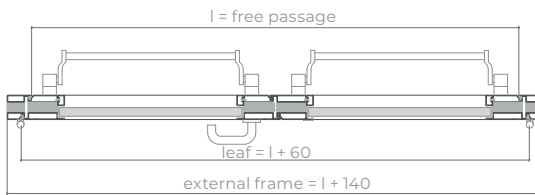
interior view



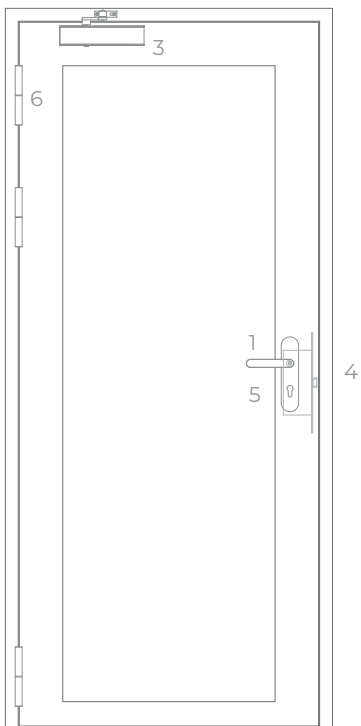
interior view



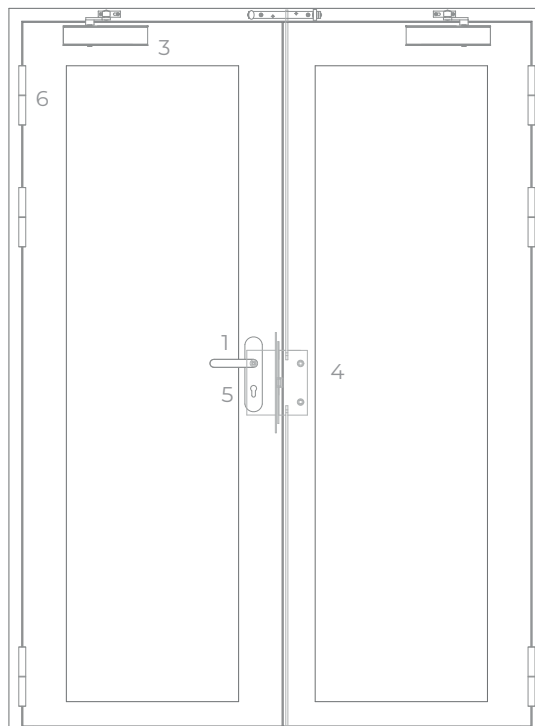
horizontal section



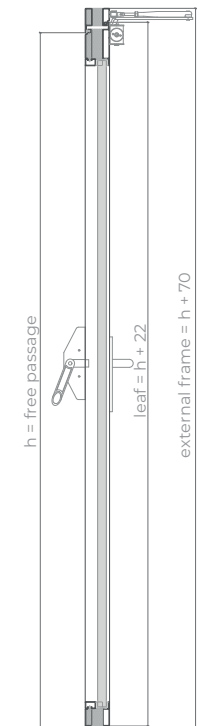
horizontal section



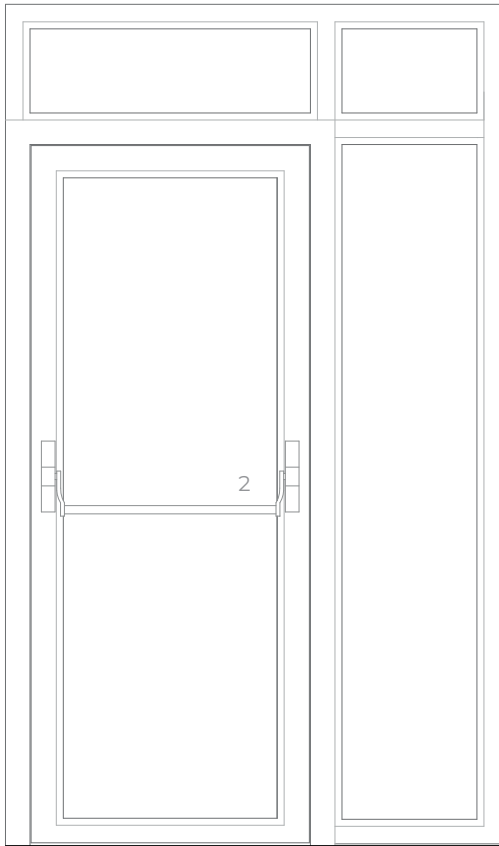
exterior view



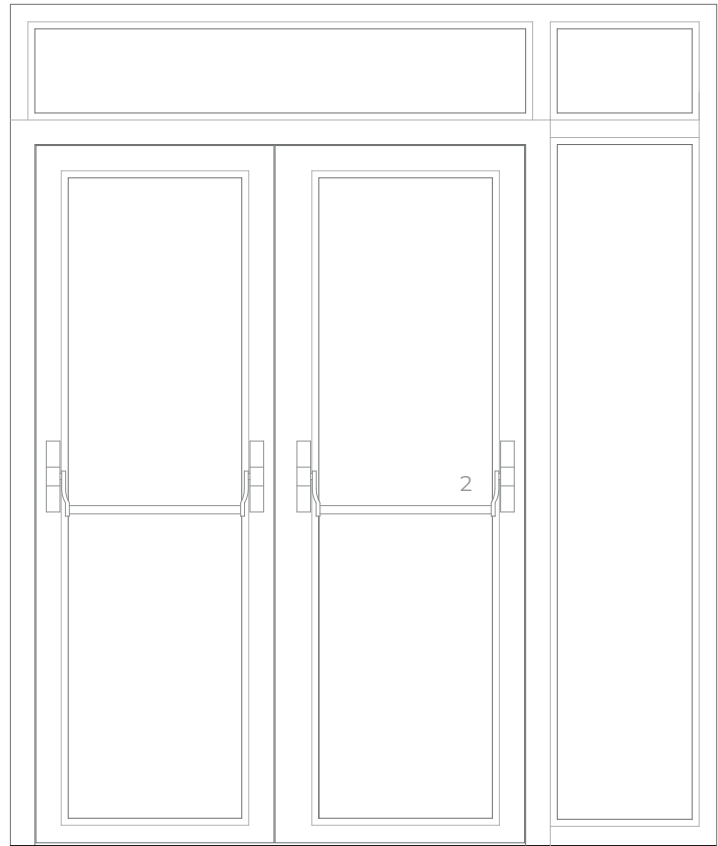
exterior view



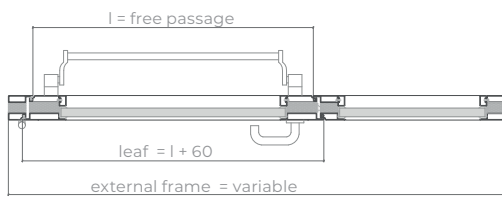
vertical section



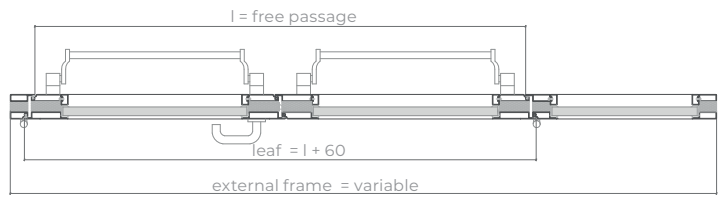
interior view



interior view

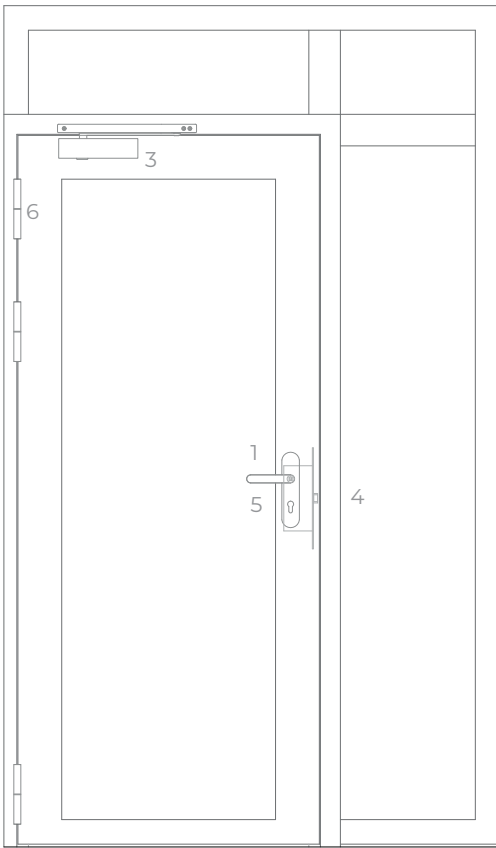


horizontal section

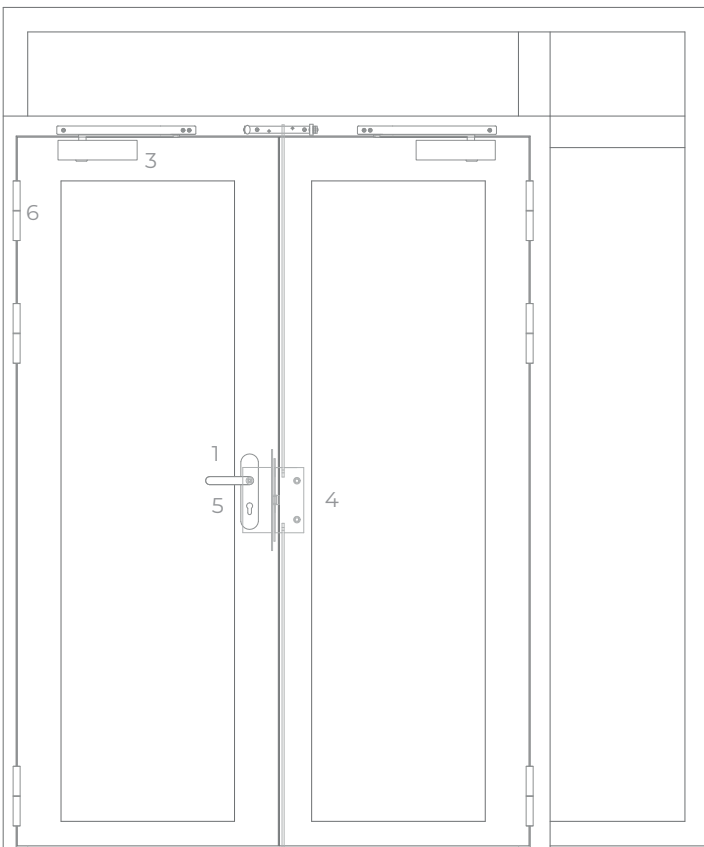


horizontal section

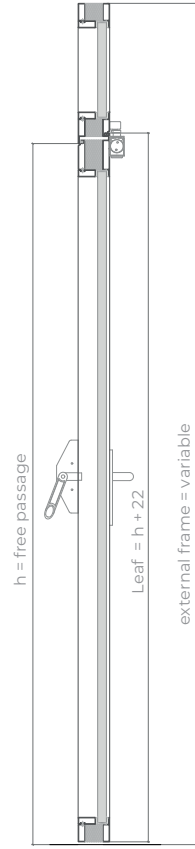




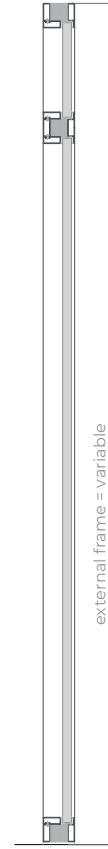
exterior view



exterior view



vertical section door



vertical section partitions



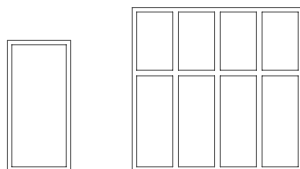
# FOGOFIL SYSTEM

WALL PARTITIONS EI60

## description

Manufactured according to the TRIA - FOGOFIL construction model, certified in accordance with Standard EN 1634-1. Profile in cold rolled steel, continuously welded, factory treated against corrosion by electrolytic galvanization, including integrated thermal rupture system, fire resistant glass of the system and galvanized glazing beds with concealed fixation

## specification



model | format

wall partitions

## classification

classification (EN 1634-1)

*classification according EN 13501-2*

both sides

EI 60

## glazed panel dimensions (mm)

*(unlimited width, by using intermediate vertical profiles)*

W maximum <sup>(1)</sup>	1932
H maximum <sup>(1)</sup>	3590
maximum area	6.01 m <sup>2</sup>

<sup>(1)</sup>W and H should be considered in conjunction with the maximum area

## overpanel dimensions (mm)

L maximum <sup>(1)</sup>	3144
H maximum <sup>(1)</sup>	894
maximum area	2.34 m <sup>2</sup>
other dimensions	on request

<sup>(1)</sup>W and H should be considered in conjunction with the maximum area

## construction

profile thickness(mm)	70
profile weight(Kg/m) <sup>(2)</sup>	7
glass thickness (mm)	25 to 31 mm
finishing (standard)	galvanized steel for painting / standard RAL color <sup>(3)</sup>
finishing (optional)	stainless steel

<sup>(2)</sup>leaf weight is conditioned by the type of glass

<sup>(3)</sup>RAL colors standard= 7035, 7038, 9005 e 9010



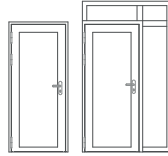
# FOGOFIL SYSTEM EI90

## description

Manufactured according to the TRIA - FOGOFIL construction model, certified in accordance with Standard EN 1634-1. Profile in cold rolled steel, continuously welded, factory treated against corrosion by electrolytic galvanization, including integrated thermal break system, fire resistant glass of the system, galvanized glazing beds with concealed fixation and welded or bolted system hinges.

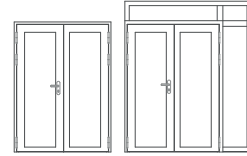
## specification

model | format



glazed single leaf door

glazed single leaf door +  
overpanel and/or side panel



glazed double leaf door

glazed double leaf door +  
overpanel and/or side panel

## classification

classification (EN 1634-1)

*classification according EN 13501-2*

both sides

EI 90

both sides

EI 90

## leaf dimensions (mm)

W x H (standard)<sup>(1)</sup>

800 / 900 x 2000 / 2100

1400 / 1600 / 1800 x 2000 / 2100

W maximum<sup>(2)</sup>

1380

1380

H maximum<sup>(2)</sup>

2676

2676

maximum area

3.10m<sup>2</sup>

3.10m<sup>2</sup>

external frame (standard)

L + 140 x H + 70

L + 140 x H + 70

## side panel (mm)

W maximum<sup>(2)</sup>

1932

1932

H maximum<sup>(2)</sup>

3590

3590

maximum area

6.01m<sup>2</sup>

6.01m<sup>2</sup>

## over paper dimensions (mm)

W maximum (per leaf) <sup>(2*)</sup>	3144	3144
H maximum (per leaf) <sup>(2*)</sup>	894	894
maximum area	2.34m <sup>2</sup>	2.34m <sup>2</sup>
other dimensions	on request	on request

<sup>(\*)</sup> W x H = width x height = free passage

<sup>(2)</sup> width e height should be considered in conjunction with the maximum area indicated

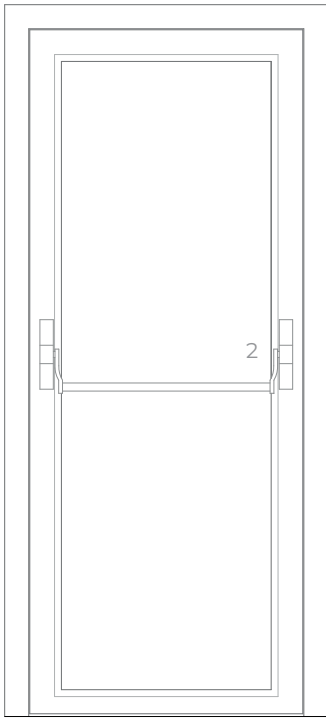
## construction

profile thickness (mm)	90	90
profile weight (Kg/ ml) <sup>(3)</sup>	8	8
hinges (per leaf) <sup>(4)</sup>	2	2
glass thickness (mm)	the thickness can vary from 40 to 56mm, according to type of glass EI90	the thickness can vary from 40 to 56mm, according to type of glass EI90
finishing (standard)	galvanized steel for painting / standard RAL color <sup>(5)</sup>	galvanized steel for painting / standard RAL color <sup>(5)</sup>
finishing (optional)	stainless steel (Consult TRIA technical department to evaluate this option).	stainless steel (Consult TRIA technical department to evaluate this option).

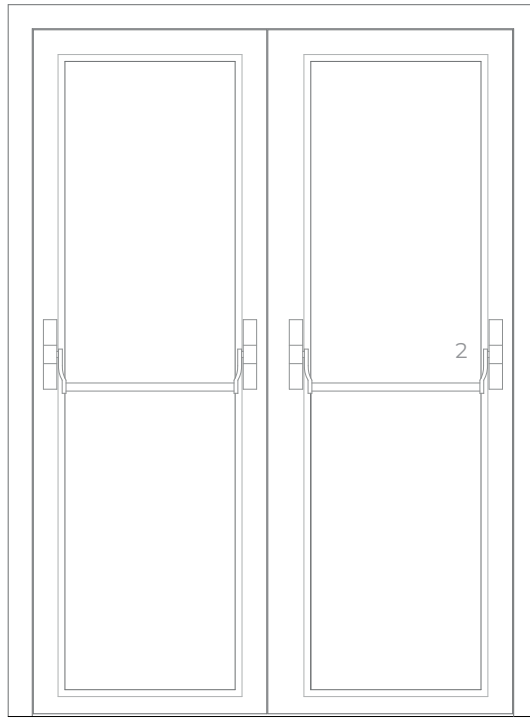
<sup>(3)</sup> leaf weight is conditioned by type of glass

<sup>(4)</sup> the number of hinges, per leaf, may be increased depending on the height, size and intensity of use

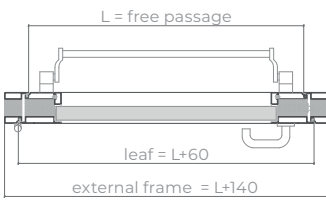
<sup>(5)</sup> RAL colors standard= 7035, 7038, 9005 e 9010



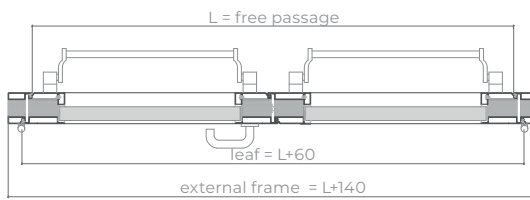
interior view



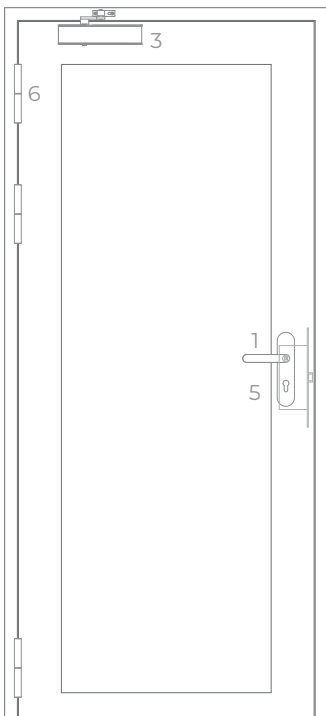
interior view



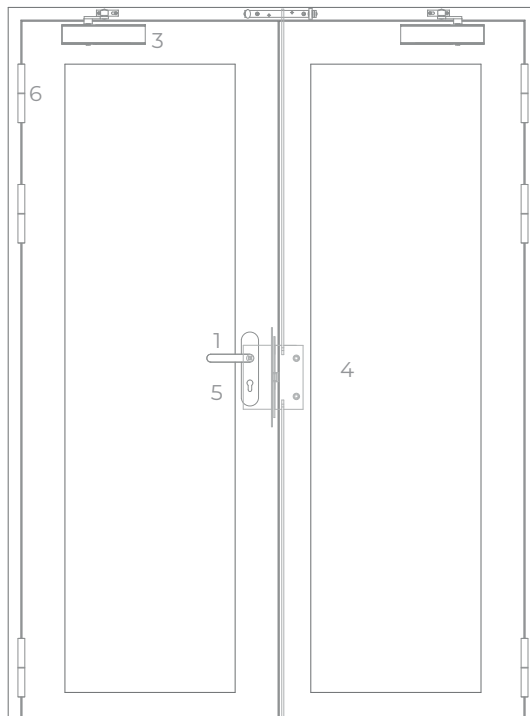
horizontal section



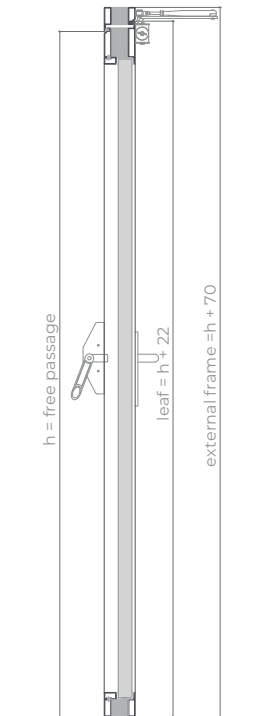
horizontal section



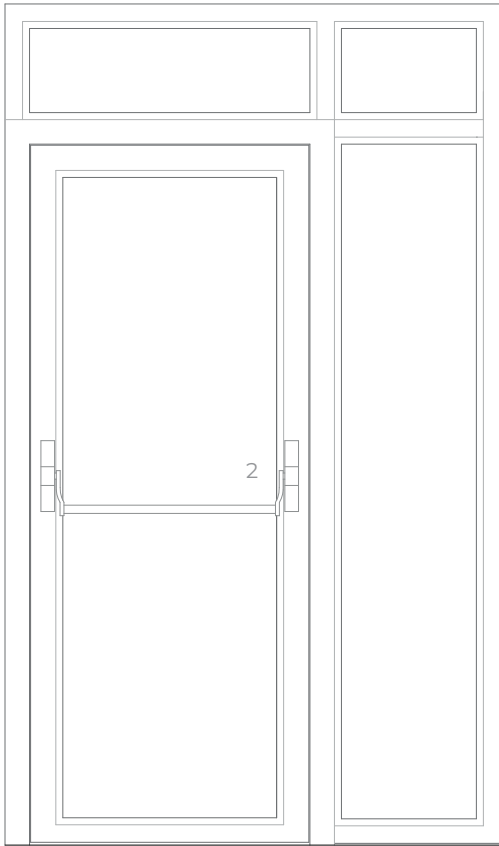
exterior view



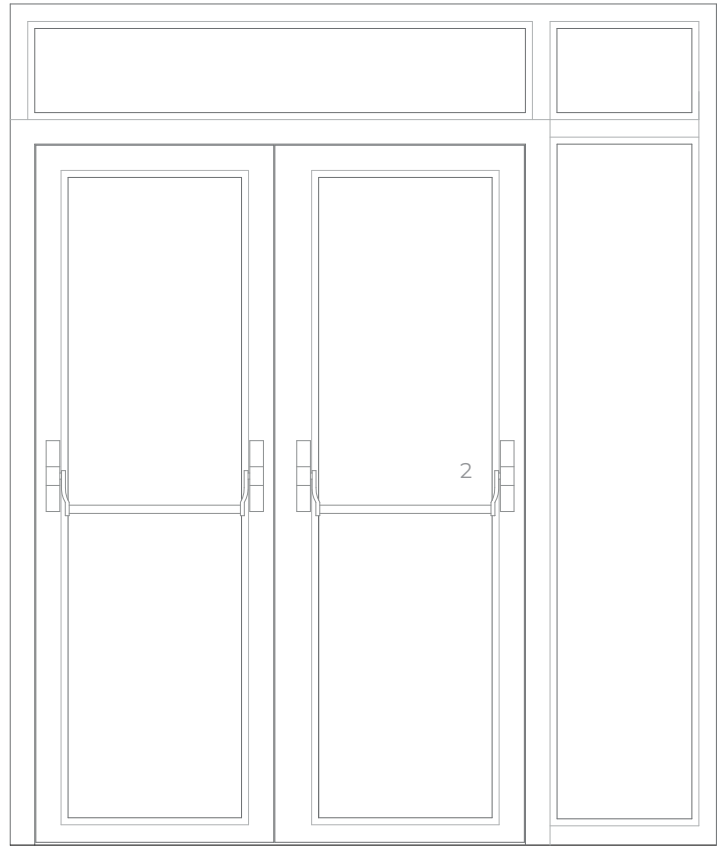
exterior view



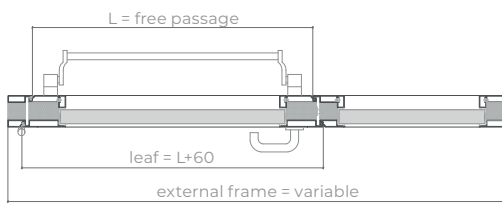
vertical section



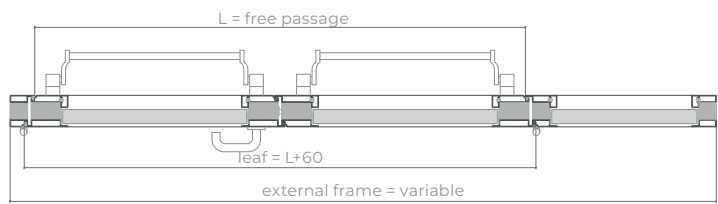
interior view



interior view

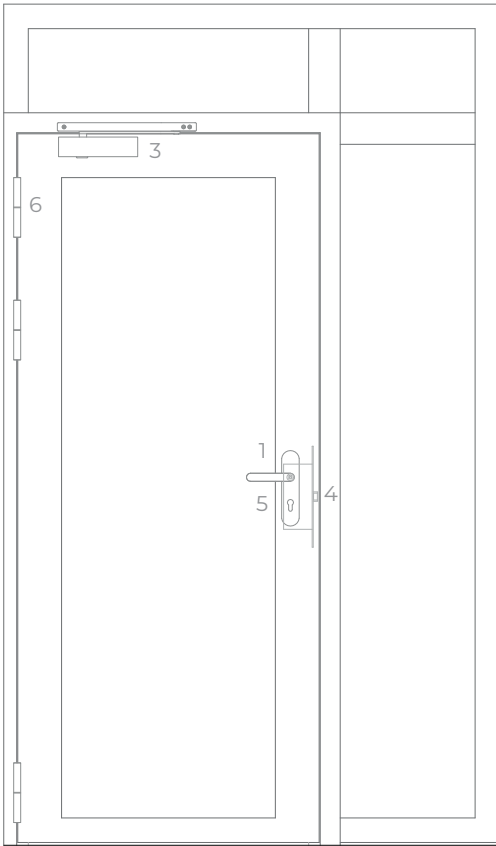


horizontal section

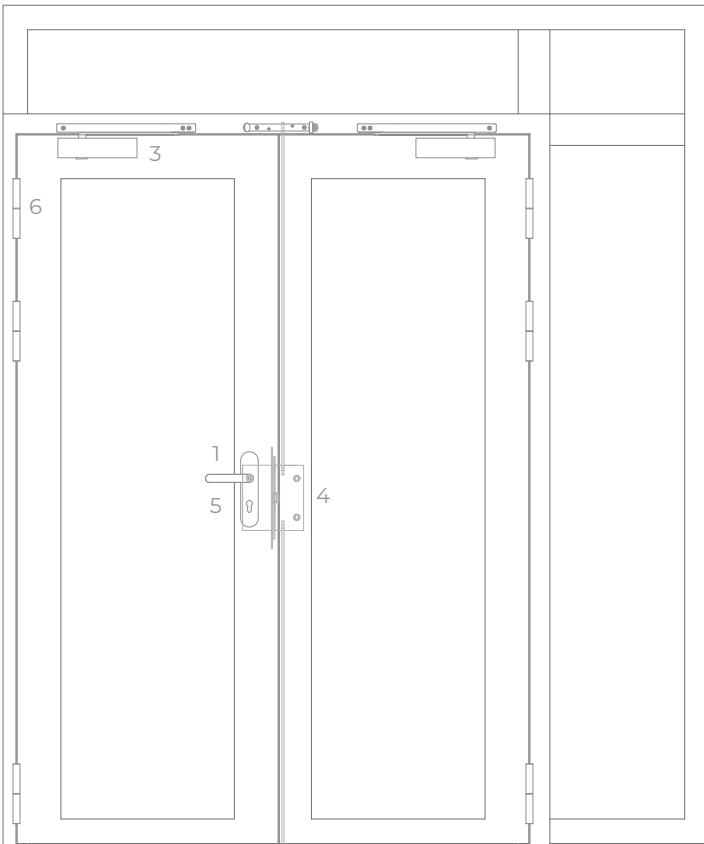


horizontal section

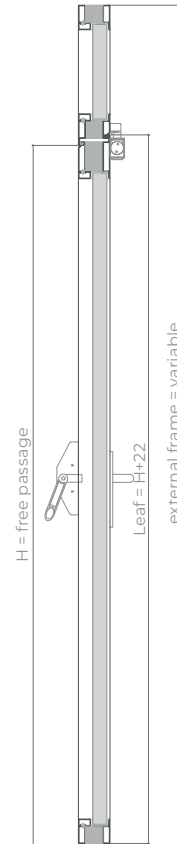




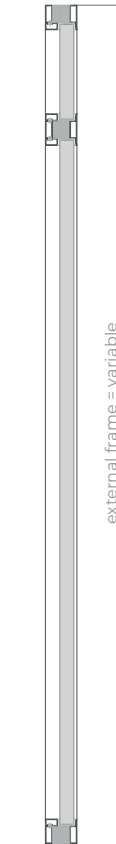
exterior view



exterior view



vertical section door



vertical section partitions



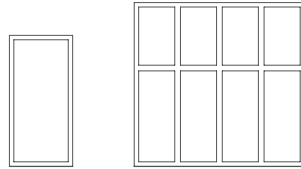
# FOGOFIL SYSTEM

WALL PARTITIONS EI90

## description

Manufactured according to the TRIA - FOGOFIL construction model, certified in accordance with Standard EN 1634-1. Profile in cold rolled steel, continuously welded, factory treated against corrosion by electrolytic galvanization, including integrated thermal rupture system, fire resistant glass of the system and galvanized glazing beds with concealed fixation.

## specification



model | format

wall partitions

## classification

classification (EN 1634-1)

*classification according EN 13501-2*

both sides

EI 90

## glazed panels dimensions

*(unlimited width, by using intermediate vertical profiles)*

W maximum <sup>(1)</sup>	1932
H maximum <sup>(1)</sup>	3590
maximum area	6.01 m <sup>2</sup>

<sup>(1)</sup>W and H should be considered in conjunction with the maximum area

## overpanel dimensions (mm)

W maximum <sup>(1)</sup>	3144
H maximum <sup>(1)</sup>	894
maximum area	2.34 m <sup>2</sup>
other dimensions	on request

<sup>(1)</sup>W and H should be considered in conjunction with the maximum area

## construction

profile thickness (mm)	90
profile weight (Kg/ ml) <sup>(2)</sup>	6
glass thickness (mm)	40 to 56 mm
finishing (standard)	galvanized steel for painting / standard RAL color <sup>(3)</sup>
finishing (optional)	stainless steel

<sup>(2)</sup>leaf weight is conditioned by the type of glass

<sup>(3)</sup>RAL colors standard= 7035, 7038, 9005 e 9010

GROUP COMPANY



---

**TRIA DOORS**

Parque Ind. Manuel Lourenço Ferreira - Lt.43  
3450 - 232 Mortágua, Portugal  
//+351 231 927 480 //info@tria-doors.com  
**www.tria-doors.com**

VERS.10.22A