

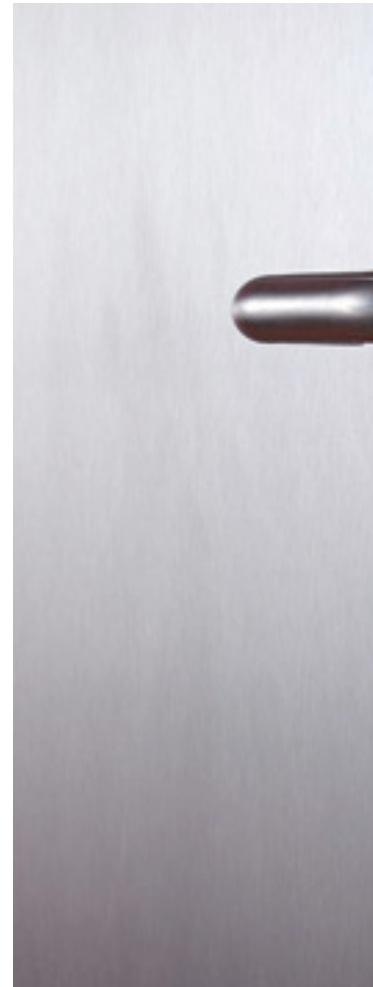


# PL1.60G & PL2.60G

## PLANO SERIES



reddot design award winner  
plano series doors





## MODELS

**PL1.60G**  
single hinged leaf

**PL2.60G**  
double hinged leaf



reddot design award winner  
plano series doors



MODELS

**PL1.60G**

**PL2.60G**

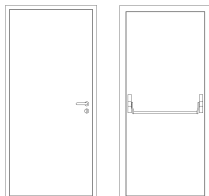
## description

Hinged metal door with coplanar leaf and frame on both sides. The frame is made of bended electro-zinc coated steel profiles (1.5 mm thickness) welded to each other.

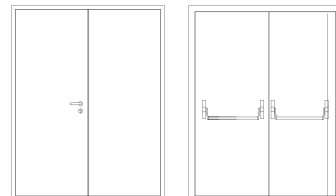
Steel spikes welded in the hinges side engage the leaf to the frame when the door is closed. The leaf is made of two electro-zinc coated steel panels (0.8 mm thickness) and contains thermal insulating and acoustic materials according to the TRIA constructive system.

The use of intumescent joints ensures the necessary tightness against flames and hot gases. The pivoting behavior of the door is ensured by three hidden hinges TECTUS - SIMONSWERK. If necessary, it is possible to incorporate an intumescent grid in the leaf.

## specification



**PL1.60G** | single hinged leaf



**PL2.60G** | double hinged leaf

model | typology

## classification achieved when tested

FR integrity (EN 1634-1) <sup>(1)</sup>	E 30 / E 45 / E 60
FR integrity and insulation (EN 1634-1) <sup>(1)</sup>	EI <sub>1</sub> 30 / EI <sub>2</sub> 30 / EI <sub>2</sub> 45 / EI <sub>2</sub> 60
resistance to repeated opening and closing maneuvers (EN 1191)	C5

<sup>(1)</sup> classification according to standard EN 13501-2

## dimensions (mm)

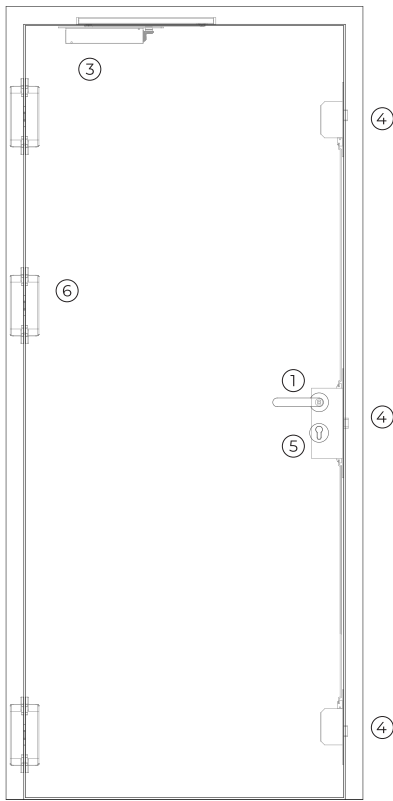
W x H (standard) <sup>(2)</sup>	800 / 900 x 2000 / 2100	1400 / 1600 / 1800 x 2000 / 2100
W maximum	1155	2645
H maximum	3015	3015
external frame (standard)	W + 144 x H + 72	W + 144 x H + 72
other dimensions	upon request	upon request

<sup>(2)</sup> W x H = width x height = free passage

## construction

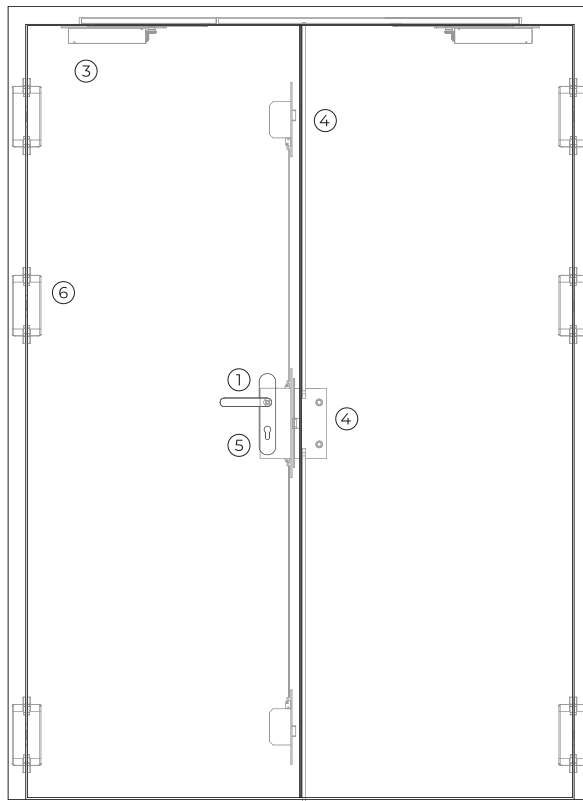
leaf thickness (mm)	63 (to paint) / 69 (leafed)	63 (to paint) / 69 (leafed)
leaf weight (kg/m <sup>2</sup> )	45 (to paint) / 49 (leafed)	45 (to paint) / 49 (leafed)
hinges (per leaf)	3 (hidden)	3 (hidden)
standard vision panel (mm)	Ø300 / 300x400 / 400x1500 / 500x1500	Ø300 / 300x400 / 400x1500 / 500x1500
finishing (standard)	steel electrocoating paint / lacquering in standard RAL color <sup>(3)</sup>	steel electrocoating paint / lacquering in standard RAL color <sup>(3)</sup>
finishing (optional)	stainless steel / wood veneer	stainless steel / wood veneer
intumescent grid (mm) (optional)	500x400	500x400

<sup>(3)</sup> standard RAL colors = 7035, 7038, 9005 e 9010



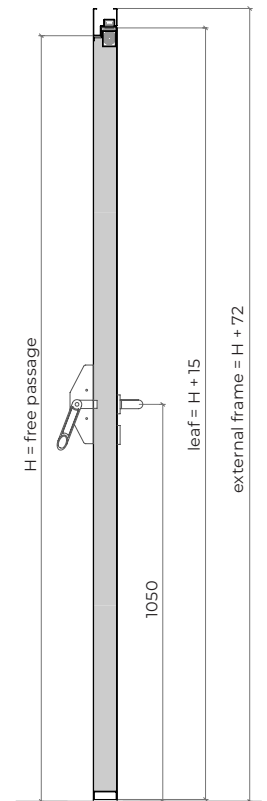
exterior view

PL1.60G

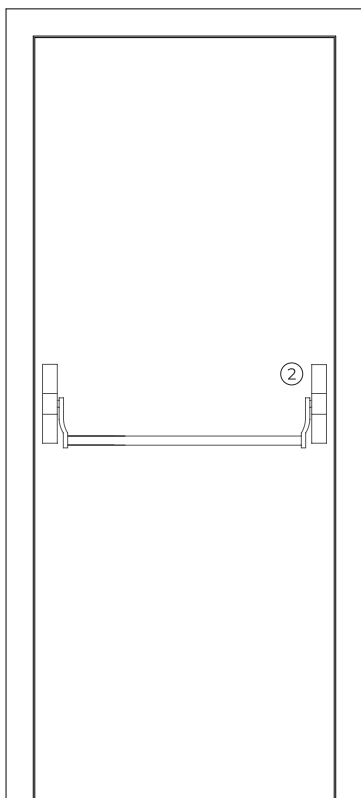
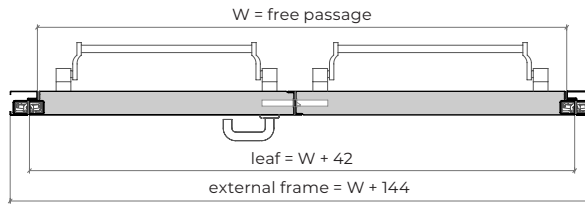
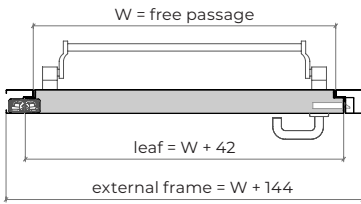


exterior view

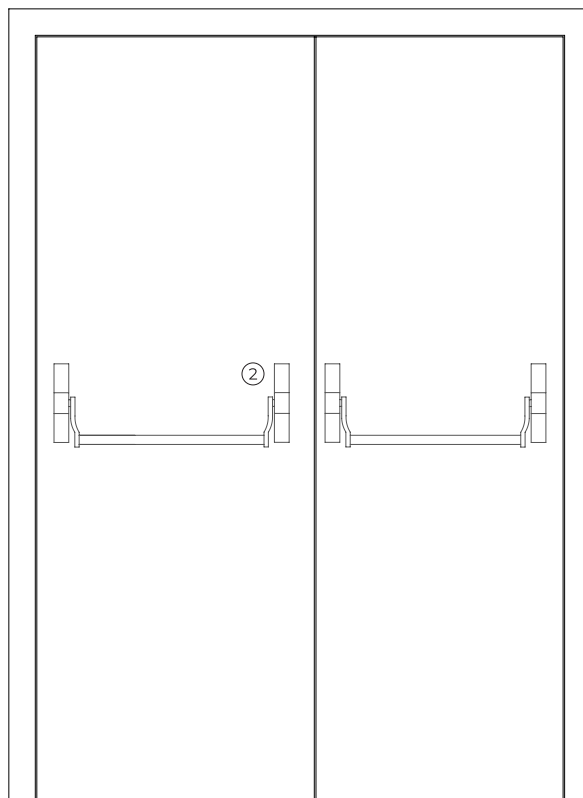
PL2.60G



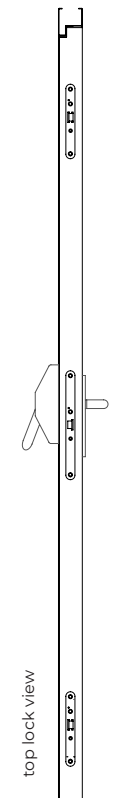
vertical view



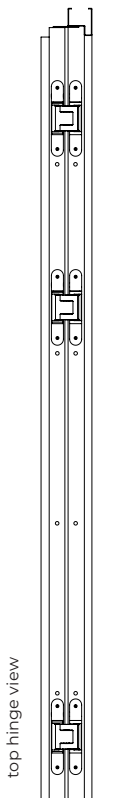
interior view



interior view

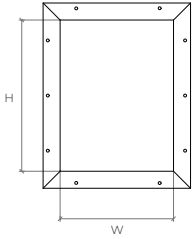


top lock view

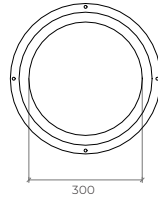


top hinge view

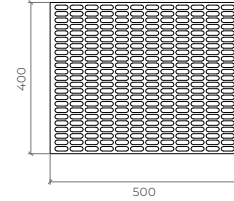
# optionals



rectangular vision panel  
AxL (400x300/1500x400/1500x500)



round vision panel



intumescent grid

# accessories and hardware

PL1.60G

PL2.60G

## handle / anti-panic bar <sup>(4)</sup>

- |   |          |   |
|---|----------|---|
| 1 | standard | anti-panic lever handle with drill finished in black (standard) or stainless steel.                             |
| 2 | standard | anti-panic bar with gear unit, tube, cover caps and arms finished in nylon black (standard) or stainless steel. |

<sup>(4)</sup> alternatively, the door may be equipped with a pair of handles.

## hidraulic door closer <sup>(5)</sup>

- |   |          |                     |   |
|---|----------|---------------------|---|
| 3 | standard | hidden door closer. | hidden door closers with closing sequence selector. |
|---|----------|---------------------|---|

<sup>(5)</sup> with electromagnetic hold-open (optional).

## lock / counter lock

- |   |          |  |   |
|---|----------|--|---|
| 4 | standard | anti-panic lock with 3 locking points. | anti-panic lock with 3 locking points + counter lock. |
|---|----------|--|---|

## cylinder

- |   |          |                                  |
|---|----------|----------------------------------|
| 5 | standard | 1/2 cylinder (european profile). |
|---|----------|----------------------------------|

## hinges

- |   |          |                  |                             |
|---|----------|------------------|-----------------------------|
| 6 | standard | 3 hidden hinges. | 3 hidden hinges (per leaf). |
|---|----------|------------------|-----------------------------|

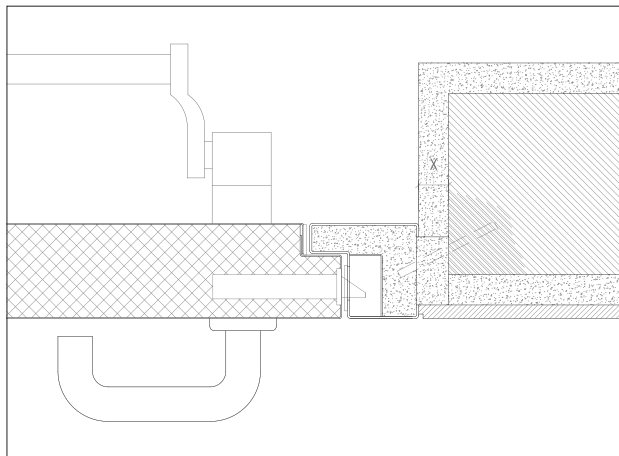
## others

- |   |          |  |  |
|---|----------|--|--|
| 7 | optional | rectangular and round vision panel, intumescent grid, electromagnetic lock, cable transfer, card reader. |  |
|---|----------|--|--|

**Note:** option for coating available – maximum 4 mm | 69 mm (see details).

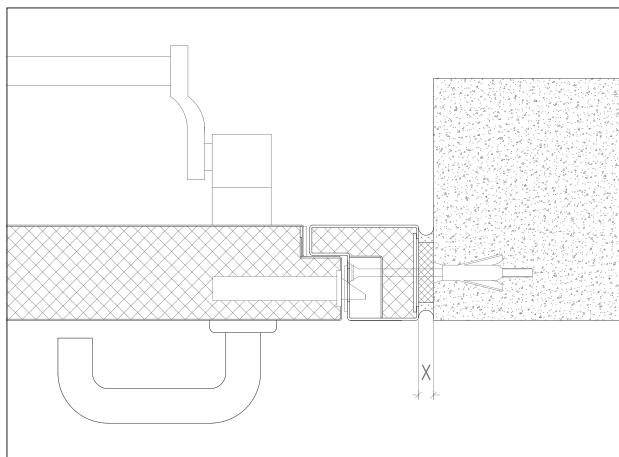
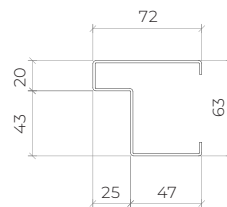
# details

## PAINT VERSION 63 mm



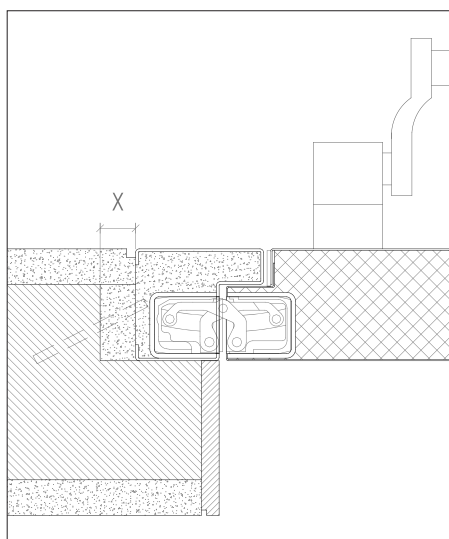
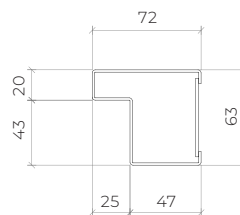
X > 20 mm (steel rod fixation)

standard frame | masonry wall mounting | steel rod fixation | plaster and wood finishes

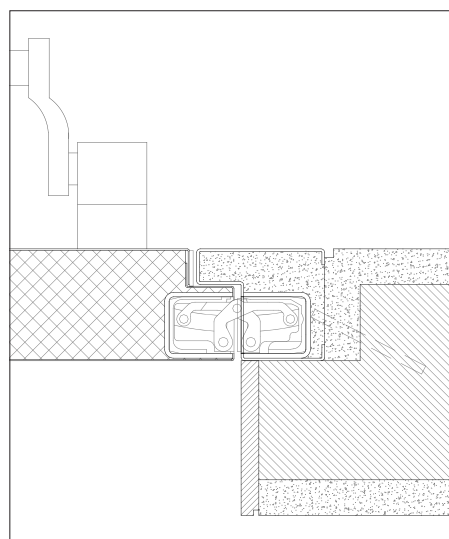
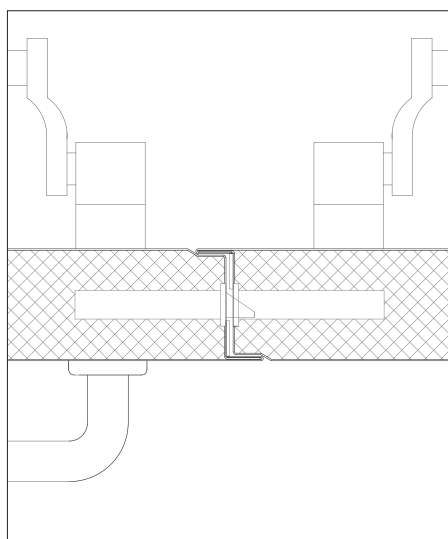


X ≥ 5 - 10 mm (for fixing with metal wall plugs according to wall type)

standard frame | concrete wall mounting | metal wall plugs fixation



X > 20 mm (steel rod fixation)

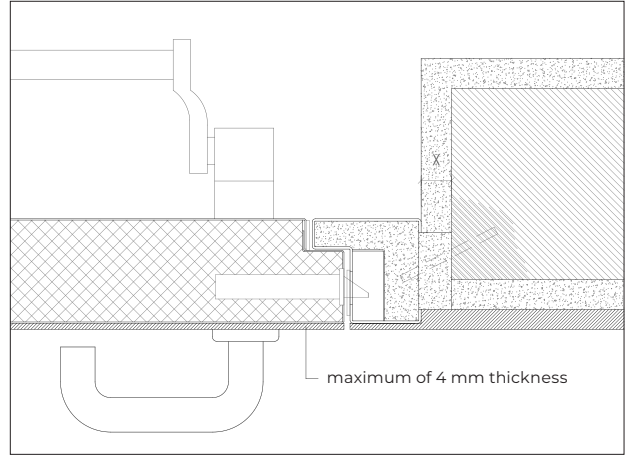
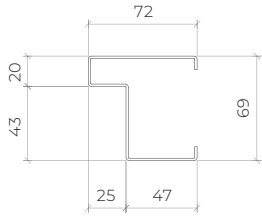


standard frame | masonry wall mounting | steel rod fixation | plaster and wood finishes



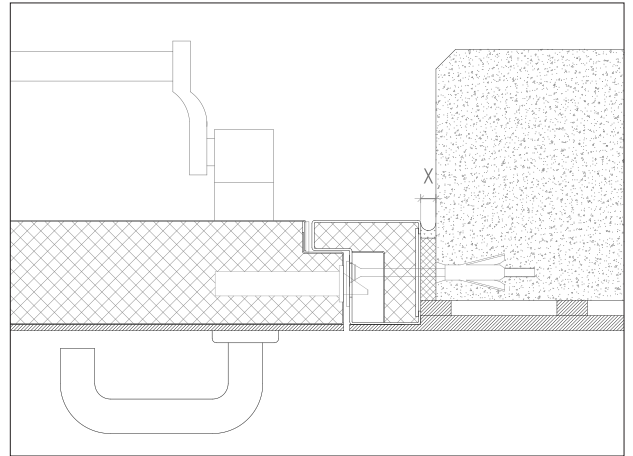
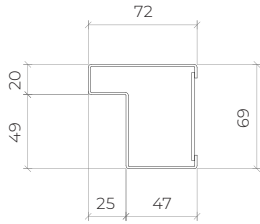
# LEAFED VERSION 69 mm

standard frame | masonry wall mounting | steel rod fixation | plaster and wood finishes

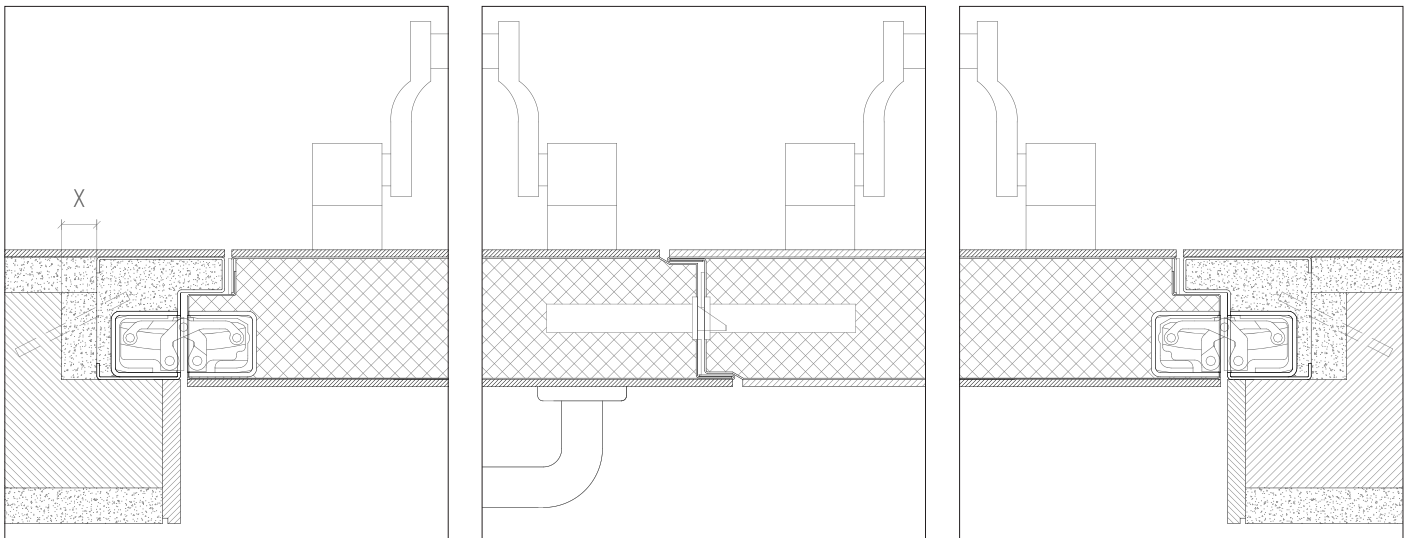


X > 20 mm (steel rod fixation)

standard frame | concrete wall mounting | metal wall plugs fixation | wood finishes



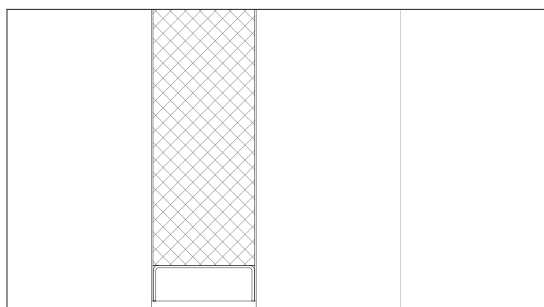
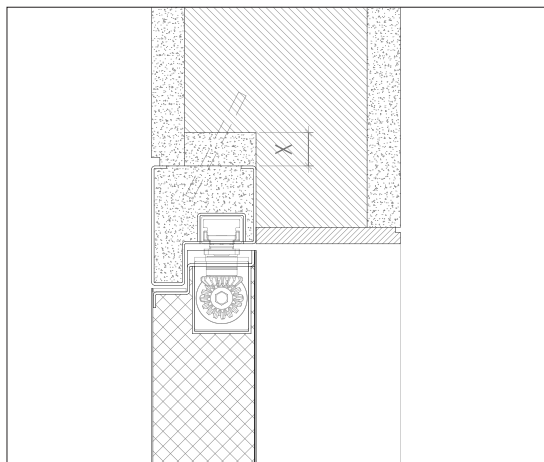
X ≥ 5 - 10 mm (for fixing with metal wall plugs according to wall type)



standard frame | leaf finished with 4mm MDF | masonry wall mounting | steel rod fixation | plaster and wood finishes

# details

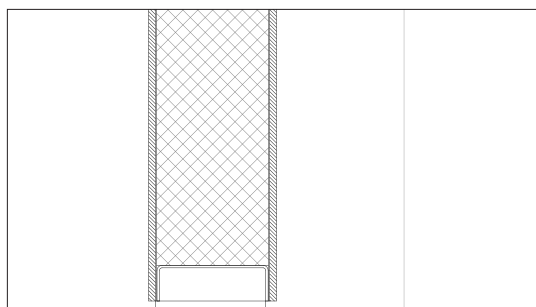
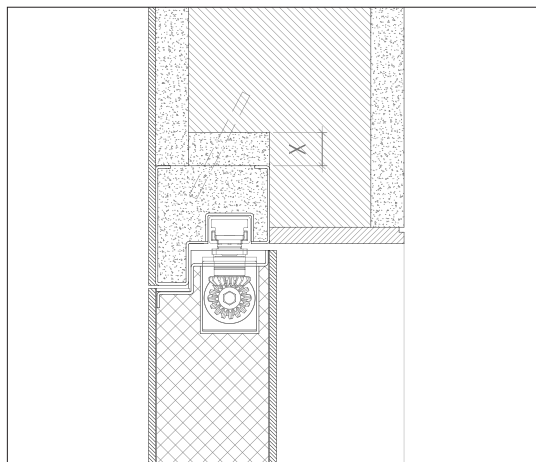
## PAINT VERSION 63 mm



X ≥ 20 mm (steel rod fixation)

standard frame | masonry wall mounting | steel rod fixation | plaster and wood finishes | hidden door closer

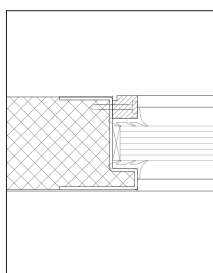
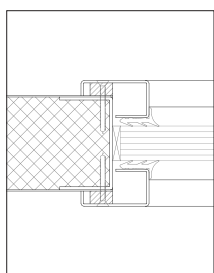
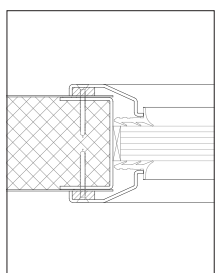
## LEAFED VERSION 69 mm



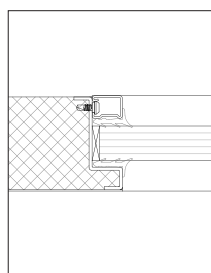
X ≥ 20 mm (steel rod fixation)

standard frame | leaf finished with 4mm MDF | masonry wall mounting | steel rod fixation | plaster and wood finishes | hidden door closer

# types of vision panels



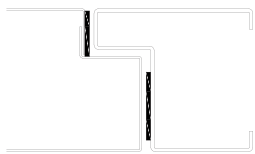
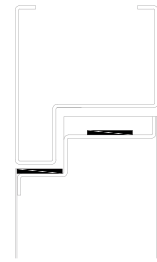
exclusive solution of the series



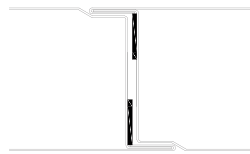
exclusive solution of the series

# technical details

The use of intumescent joints ensures the necessary tightness against flames and hot gases.



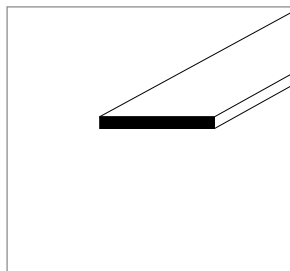
single leaf  
horizontal section



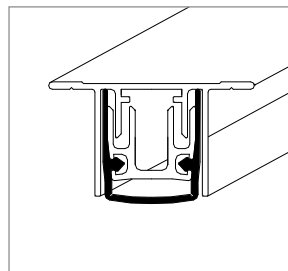
double leaf  
horizontal section



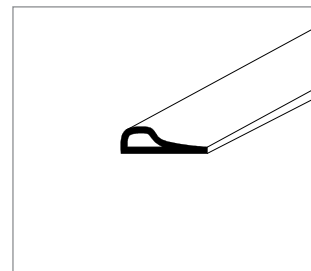
vertical section



intumescent seal



automatic seal



acoustic and intumescent seal

GROUP COMPANY



---

**TRIA DOORS**

Parque Ind. Manuel Lourenço Ferreira - Lt.43  
3450 - 232 Mortágua, Portugal  
//+351 231 927 480 //info@tria-doors.com  
**www.tria-doors.com**

VERS.10.22A