



PL1.FX & PL1.FXV

PLANO SERIES



reddot design award winner
plano series doors





MODELS



reddot design award winner
plano series doors

PL1.FX
double hinged leaf

PL1.FXV
single hinged leaf



MODELS

PL1.FX

PL1.FXV

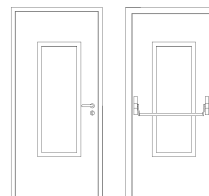
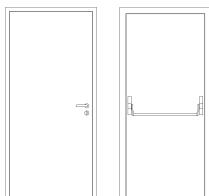
description

Hinged metal door with coplanar leaf and frame on both sides. The frame is made of bended electro-zinc coated steel profiles (1.5 mm thickness) welded to each other. The installation of the frame to the wall is made through face fixing, supported by a inner metallic portico to which the frame is coupled.

Steel spikes welded in the hinges side engage the leaf to the frame when the door is closed. The leaf is made of two electro-zinc coated steel panels (0.8 mm thickness) and contains thermal insulating and acoustic materials according to the TRIA constructive system.

The use of intumescent joints ensures the necessary tightness against flames and hot gases. The pivoting behavior of the door is ensured by three hidden hinges TECTUS – SIMONSWERK.

specification



model | typology

PL1.FX | single hinged leaf

PL1.FXV | single hinged leaf

classification achieved when tested

FR Integrity (EN 1634-1) ⁽¹⁾

opposite side to the hinges

hinges side

opposite side to the hinges

hinges side

E 30 / E 45 / E 60

E 30 / E 45 / E 60

E 30 / E 45

E 30 / E 45 / E 60

FR Integrity and insulation (EN 1634-1) ⁽¹⁾

EI₂ 30

EI₂ 30 / EI₂ 45

EI₂ 30

EI₂ 30 / EI₂ 45

⁽¹⁾ classification according to standard 13501-2

EI₂ 60

dimensions (mm)

W x H (standard) ⁽²⁾

800 / 900 x 2000 / 2100

800 / 900 x 2000 / 2100

W maximum

1224

1224

H maximum

2739

2739

external frame (standard)

W + 200 x H + 100

W + 200 x H + 100

other dimensions

upon request

upon request

⁽²⁾ W x H = width x height = free passage

construction

leaf thickness (mm)

63 (to paint) / 69 (leafed)

63 (to paint) / 69 (leafed))

leaf weight (kg / m²)

45 (to paint) / 50 (leafed))

45 (to paint) / 50 (leafed))

hinges (per leaf)

3 / 4 ⁽³⁾ (hidden)

3 / 4 ⁽³⁾ (hidden)

standard vision panel (mm)

N/A

Ø 300 / 300 x 400 / 500 x 1500

finishing (standard)

steel electrocoating paint / lacquering in standard RAL color ⁽⁴⁾

steel electrocoating paint / lacquering in standard RAL color ⁽⁴⁾

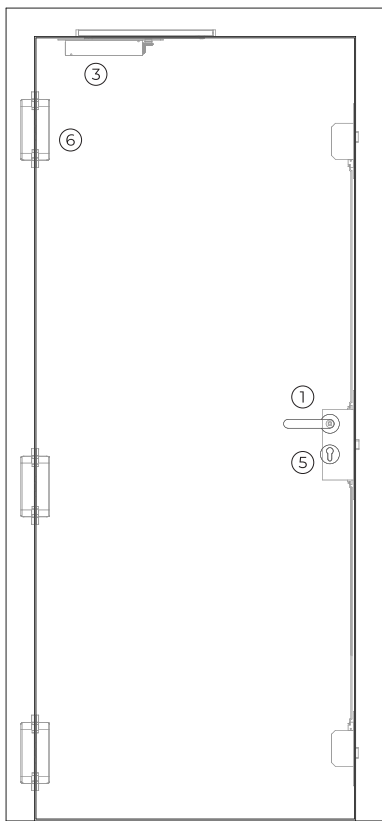
finishing (optional)

stainless steel/ wood veneer

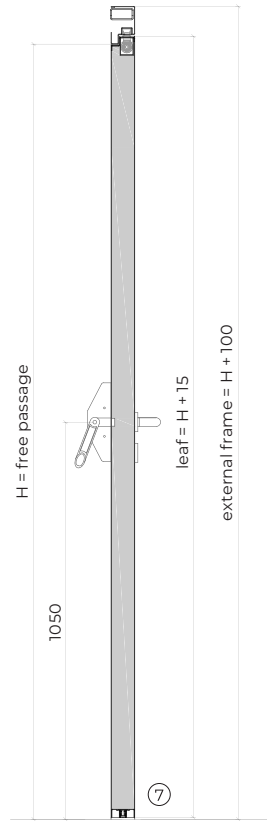
stainless steel/ wood veneer

⁽³⁾ se H ≥ 2350 mm

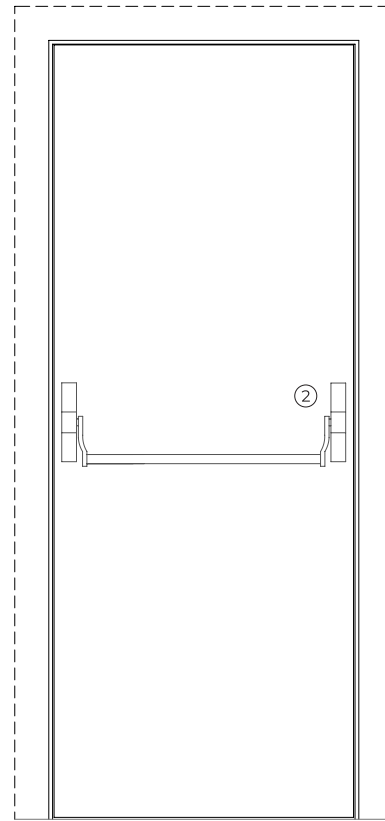
⁽⁴⁾ standard RAL colors = 7035, 7038, 9005 e 9010



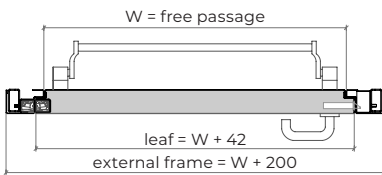
exterior view



vertical view



interior view



accessories and hardware

handle / anti-panic bar ⁽⁵⁾

- 1 standard anti-panic lever handle with drill finished in black (standard) or stainless steel.
- 2 standard anti-panic bar with gear unit, tube, cover caps and arms finished in nylon black (standard) or stainless steel.

⁽⁵⁾ alternatively, the door may be equipped with a pair of handles.

hydraulic door closer ⁽⁶⁾

- 3 standard hidden door closer.
- standard door closer with articulated arm.
- standard door closer with sliding rail.

⁽⁶⁾ with electromagnetic hold-open (optional)

lock / counter lock

- 4 standard anti-panic lock with 3 locking points

cylinder

- 5 standard 1/2 cylinder (european profile)

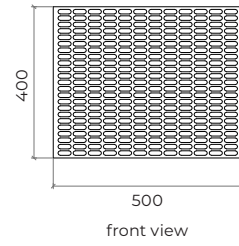
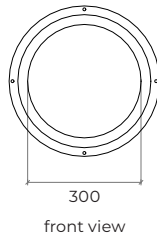
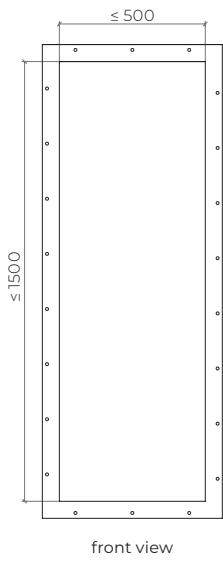
hinges

- 6 standard 3 hidden hinges

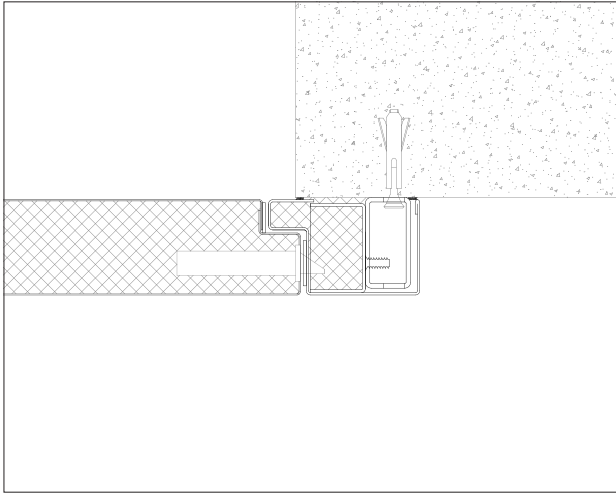
others

- 7 optional automatic seal, electromagnetic lock, cable transfer, card reader, rectangular vision panel.

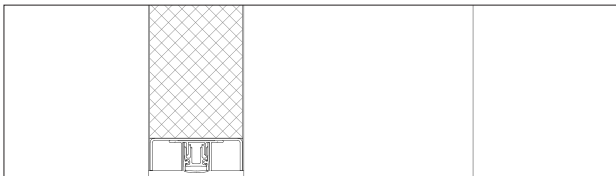
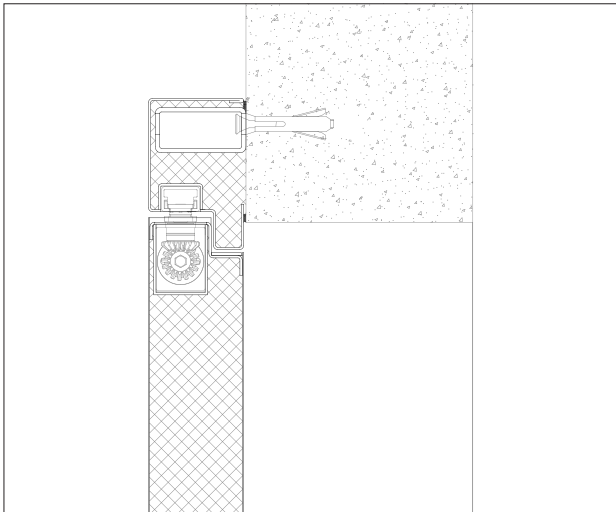
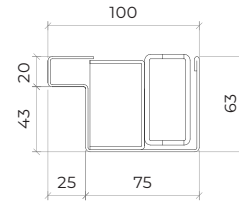
optionals



details

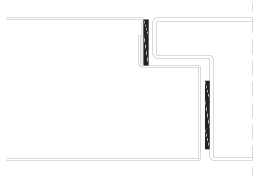
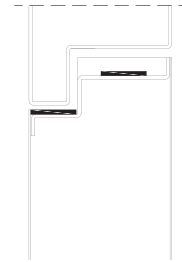


modified frame | concrete wall mounting with metallic portico | metal wall plugs fixation

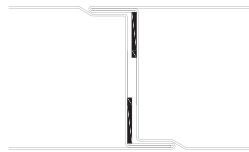


technical details

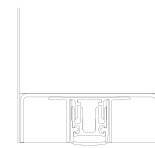
The use of intumescent joints ensures the necessary tightness against flames and hot gases. The two leaves are connected in their lower part by a bended steel u-profile that contains an automatic seal.



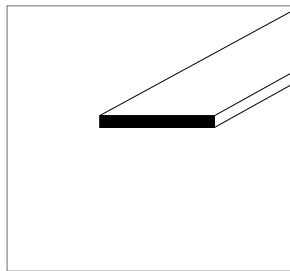
single leaf
horizontal section



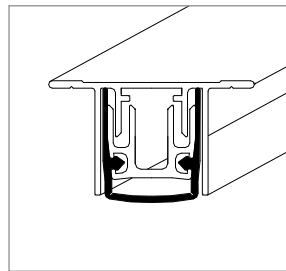
double leaf
horizontal section



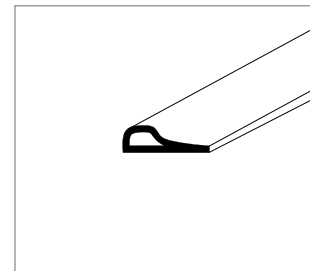
vertical section



intumescent seal



automatic seal



acoustic and intumescent seal

GROUP COMPANY



TRIA DOORS

Parque Ind. Manuel Lourenço Ferreira - Lt.43
3450 - 232 Mortágua, Portugal
//+351 231 927 480 //info@tria-doors.com
www.tria-doors.com

VERS.10.22A