



SD1-30

SD SERIES







MODEL

SD1-30

single leaf sliding door



MODEL

SD1-30

description

Metal sliding door, with and without a coplanar pedestrian door. The modular panels are made of electro-zinc coated steel sheets (1 mm) assembled on site. The core of the modular panels contains thermal insulation materials.

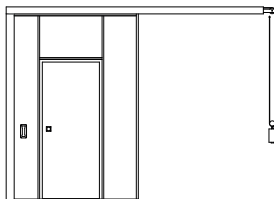
The tightness against flames and hot gases is ensured by a stop made of electro-zinc coated steel sheet (2 mm) with intumescent seals.

The system has a steel track (dimension 2 x greater than the gate width), it is fixed directly to the slab or through pendants. The sliding door moves on the steel track through a hanger with swanneck and 4 steel wheels mounted on ball bearings.

The locking system works with counterweights that move the gate in a controlled manner after it is released from the electromagnetic device that holds it in the open position.

The pedestrian door movement is ensured by a hidden pivoting system 90-135-3D, concealed inside the frame and with three-axis adjustment.

specification



model | typology

SD1-30 | single leaf sliding door

fire resistance classification

integrity (EN 1634-1)

both sides

E 30

integrity and insulation (EN 1634-1)

EI₂ 30

classification according to standard EN 13501-2
CE marking according to EN 13241 and EN 16034 standards

leaf dimension (mm)

width x height (maximum)

2990x2840

maximum area m²

8,49

other dimensions

upon request

construction

leaf thickness (mm)

69

leaf weight (kg/m²)

58

pedestrian door (optional)

W x H = 800 x 2025 mm ⁽¹⁾

finishing (standard)

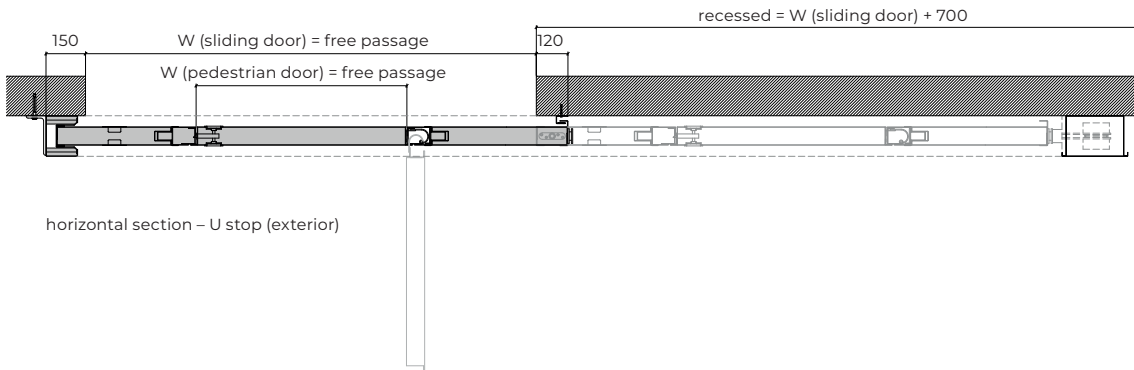
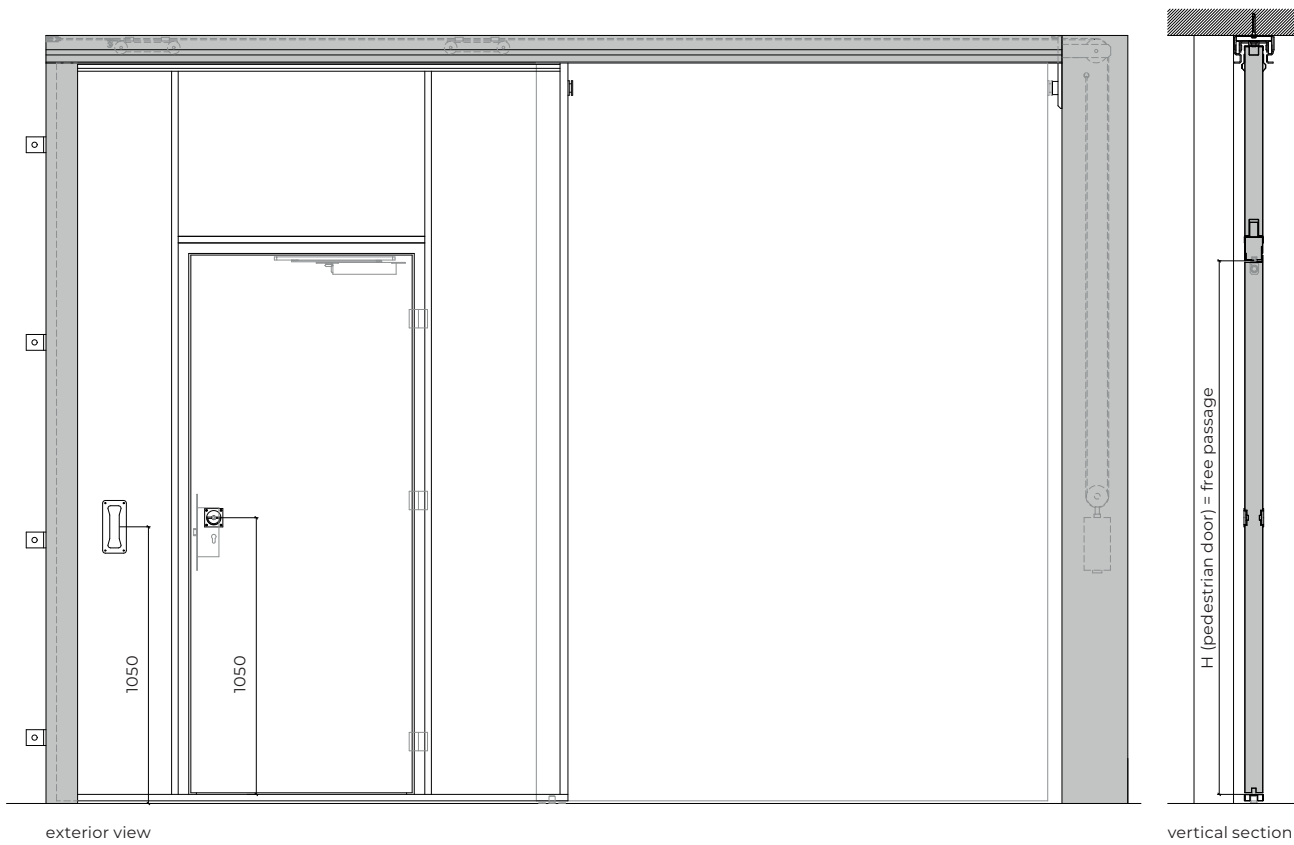
steel electrocoating paint
lacquering in standard RAL color ⁽²⁾

finishing (optional)

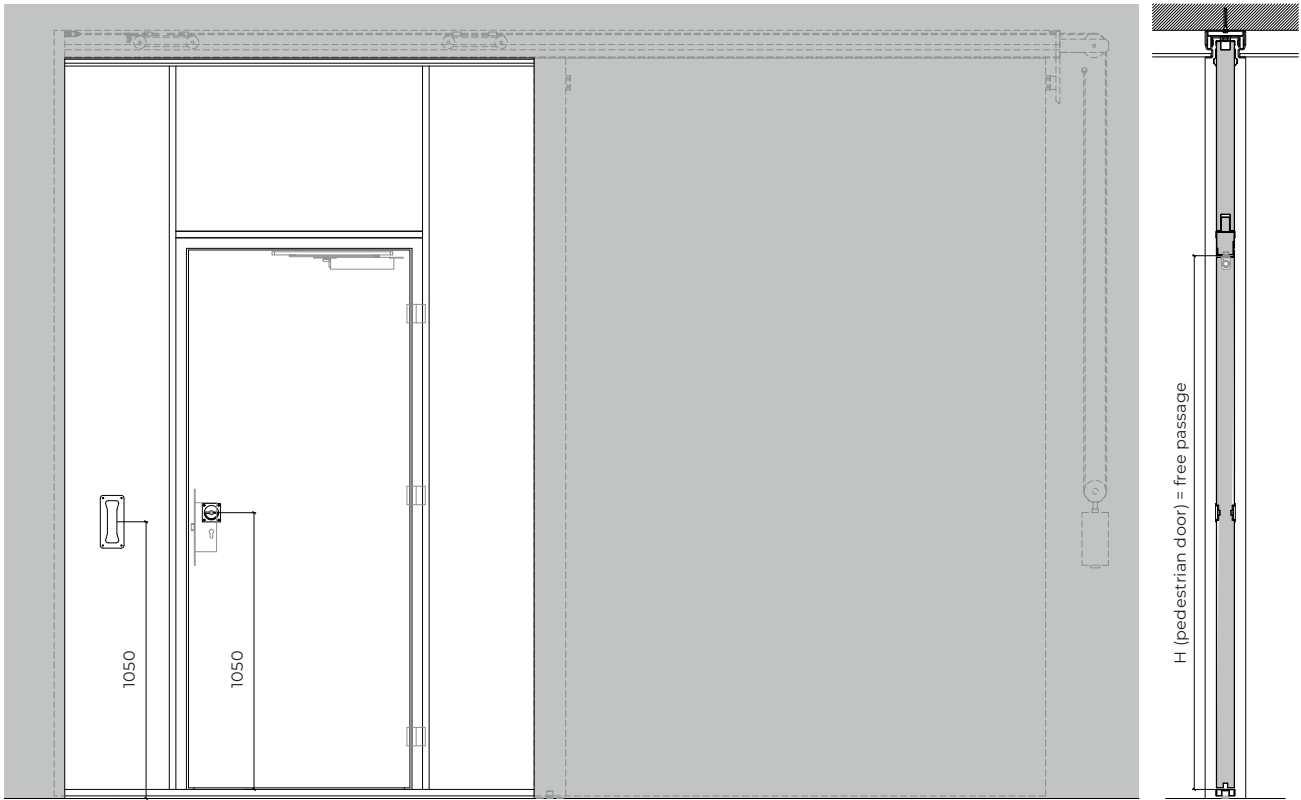
lacquering in other RAL color (upon request)

⁽¹⁾ W x H = width x height = free passage

⁽²⁾ standard RAL color = 7035, 7038, 9005 e 9010

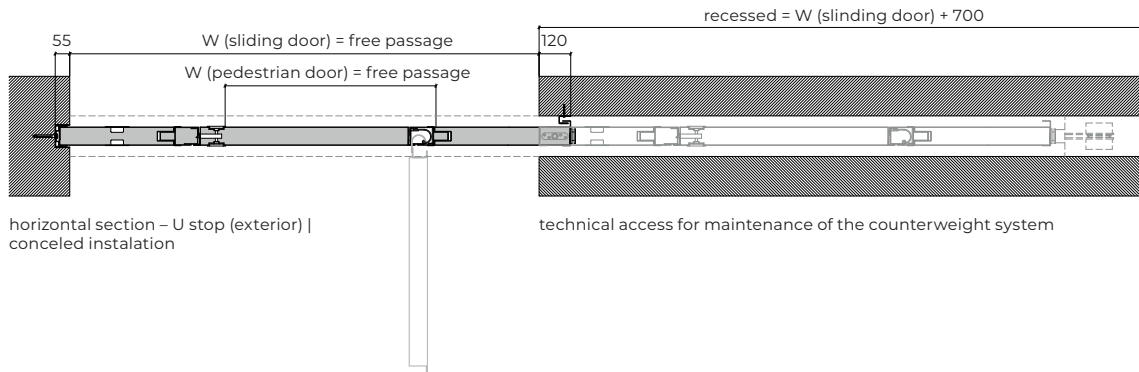


All drawings are quoted in millimeters.



exterior view

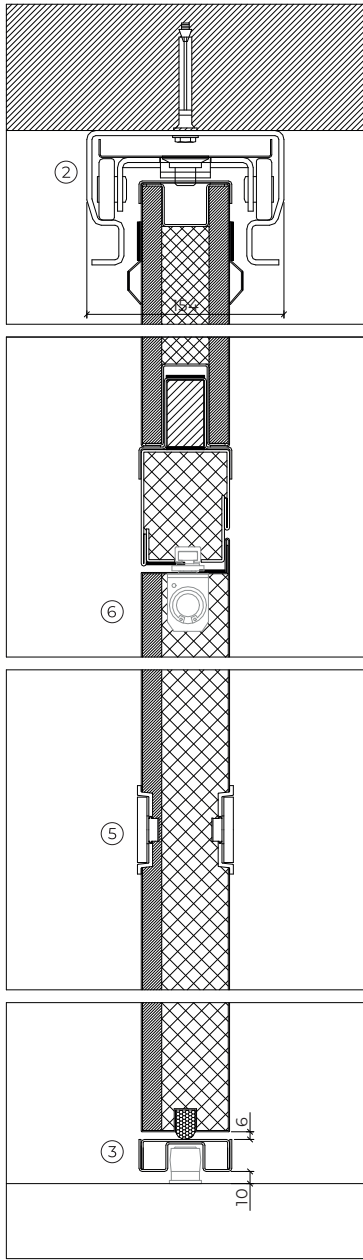
vertical section



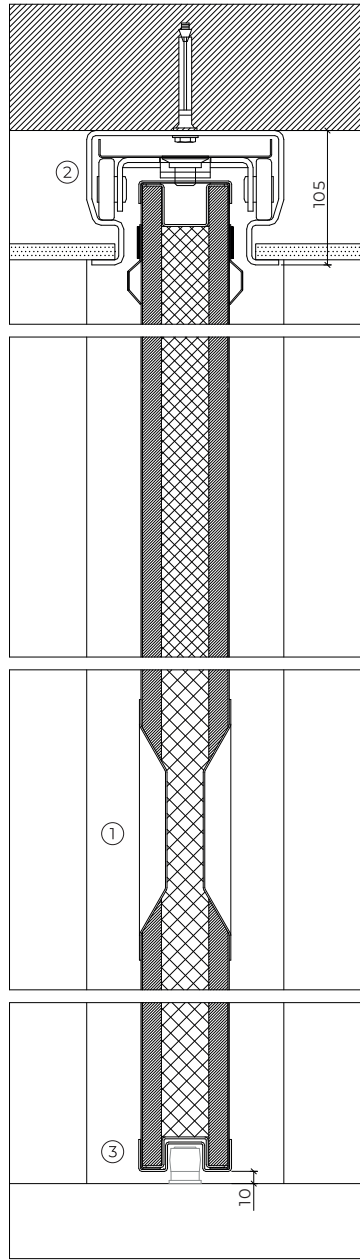
horizontal section – U stop (exterior) | concealed installation

technical access for maintenance of the counterweight system

details

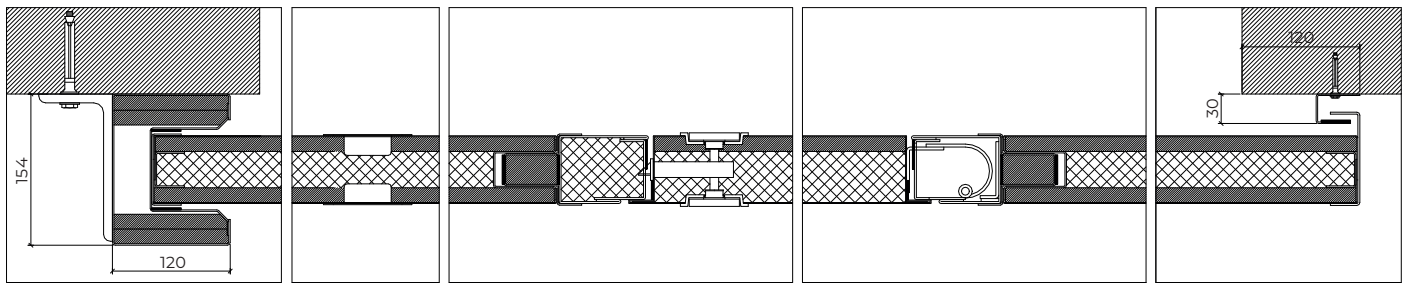


vertical section | pedestrian door



vertical section | sliding door concealed installation

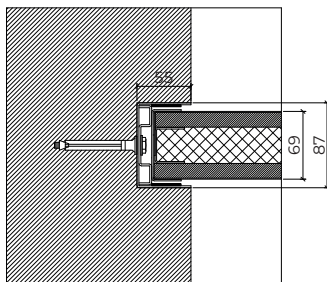
All drawings are quoted in millimeters.



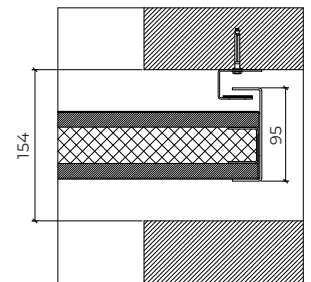
horizontal section | U stop (exterior)

horizontal section | pedestrian door

horizontal section | vertical smoke cover



horizontal section | U stop (internal)



horizontal section | vertical smoke cover

accessories and hardware

SLIDING DOOR

| | | | |
|---------------|---|----------|--|
| handle | 1 | standard | dished flush pull |
| others | 2 | standard | steel track through a hanger with swanneck and 4 steel wheels mounted on ball bearings |
| | 3 | standard | lower guide |
| | 4 | standard | electric holding magnets |

PEDESTRIAN DOOR

| | | | |
|------------------------------|---|----------|--|
| handle | 5 | standard | concealed flush handle with retractable handle |
| hydraulic door closer | 6 | standard | concealed door closer |
| hinges | 7 | standard | concealed pivotant 90-135-3D hinges |
| lock | 8 | standard | lock with 1 locking point |

GROUP COMPANY



TRIA DOORS

Parque Ind. Manuel Lourenço Ferreira - Lt.43
3450 - 232 Mortágua, Portugal
//+351 231 927 480 //info@tria-doors.com
www.tria-doors.com

VERS.10.22A